

Product Name: Lipin1 Rabbit Monoclonal Antibody**Catalog #: AMRe84315**

For research use only.

Summary

Description	Recombinant rabbit monoclonal antibody
Host	Rabbit
Application	WB,IHC,ICC/IF,ICC,FC,IP
Reactivity	Human
Conjugation	Unconjugated
Modification	Unmodified
Isotype	IgG
Clonality	Monoclonal
Form	Liquid
Concentration	
Storage	Aliquot and store at -20°C (valid for 12 months). Avoid freeze/thaw cycles.
Shipping	Ice bags
Buffer	Purified antibody in PBS with 0.05% sodium azide,0.05% protective protein and 50% glycerol.
Purification	Affinity Purification

Application

Dilution Ratio	WB 1:1000-1:2000,IHC 1:100-1:200,ICC/IF 1:50-1:200,ICC 1:50-1:200,FC 1:20-1:100,IP 1:20-1:50
Molecular Weight	Calculated MW: 99 kDa ; Observed MW: 130 kDa

Antigen Information

Gene Name	Lipin1
Alternative Names	Lipin-1; Lpin1; PAP1;;LPIN1
Gene ID	
SwissProt ID	Q14693
Immunogen	A synthesized peptide derived from human LPIN1

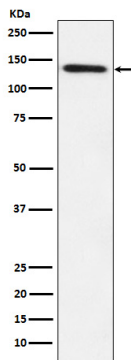
Background

Acts as a magnesium-dependent phosphatidate phosphatase enzyme which catalyzes the conversion of phosphatidic acid to

diacylglycerol during triglyceride, phosphatidylcholine and phosphatidylethanolamine biosynthesis and therefore controls the metabolism of fatty acids at different levels

Research Area

Image Data



Western blot analysis of Lipin 1 expression in HepG2 cell lysate.