

**Product Name: ILF3 Rabbit Monoclonal Antibody****Catalog #: AMRe84312**

For research use only.

**Summary**

<b>Description</b>	Recombinant rabbit monoclonal antibody
<b>Host</b>	Rabbit
<b>Application</b>	WB,IHC,ICC/IF,ICC,FC,IP
<b>Reactivity</b>	Human,Mouse
<b>Conjugation</b>	Unconjugated
<b>Modification</b>	Unmodified
<b>Isotype</b>	IgG
<b>Clonality</b>	Monoclonal
<b>Form</b>	Liquid
<b>Concentration</b>	0.71mg/ml. The concentration of this product may be batch-dependent.
<b>Storage</b>	Aliquot and store at -20°C (valid for 12 months). Avoid freeze/thaw cycles.
<b>Shipping</b>	Ice bags
<b>Buffer</b>	Purified antibody in PBS with 0.05% sodium azide,0.05% protective protein and 50% glycerol.
<b>Purification</b>	Affinity Purification

**Application**

<b>Dilution Ratio</b>	WB 1:1000-1:2000,IHC 1:100-1:200,ICC/IF 1:50-1:200,ICC 1:50-1:200,FC 1:20-1:100,IP 1:20-1:50
<b>Molecular Weight</b>	Calculated MW: 95 kDa ; Observed MW: 95,110 kDa

**Antigen Information**

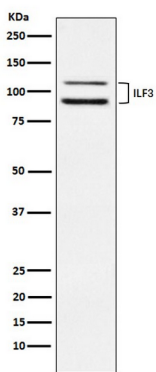
<b>Gene Name</b>	ILF3
<b>Alternative Names</b>	CBTF; DRBF; MMP4; MPP4; NF90; NFAR; NF110; NF90a; NF90b; NFAR2;TCP80; DRBP76; NF110b; NFAR-1; TCP110; MPHOSPH4; NF-AT-90;;ILF3
<b>Gene ID</b>	
<b>SwissProt ID</b>	Q12906
<b>Immunogen</b>	A synthesized peptide derived from human ILF3

**Background**

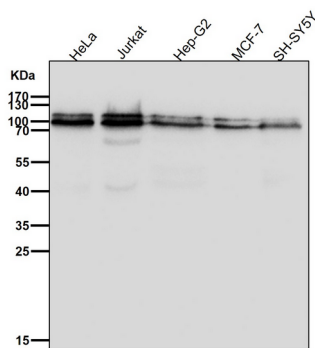
May facilitate double-stranded RNA-regulated gene expression at the level of post-transcription. Can act as a translation inhibitory protein which binds to coding sequences of acid beta-glucosidase (GCCase) and other mRNAs and functions at the initiation phase of GCCase mRNA translation, probably by inhibiting its binding to polysomes.

## Research Area

## Image Data



Western blot analysis of ILF3 expression in HeLa cell lysate.



All lanes use the Antibody at 1:2K dilution for 1 hour at room temperature.