
Product Name: CaMKI Rabbit Monoclonal Antibody**Catalog #: AMRe84291**

For research use only.

Summary

| | |
|----------------------|---|
| Description | Recombinant rabbit monoclonal antibody |
| Host | Rabbit |
| Application | WB,IHC,ICC/IF,ICC |
| Reactivity | Human,Mouse,Rat |
| Conjugation | Unconjugated |
| Modification | Unmodified |
| Isotype | IgG |
| Clonality | Monoclonal |
| Form | Liquid |
| Concentration | |
| Storage | Aliquot and store at -20°C (valid for 12 months). Avoid freeze/thaw cycles. |
| Shipping | Ice bags |
| Buffer | Purified antibody in PBS with 0.05% sodium azide,0.05% protective protein and 50% glycerol. |
| Purification | Affinity Purification |

Application

| | |
|-------------------------|---|
| Dilution Ratio | WB 1:1000-1:2000,IHC 1:100-1:200,ICC/IF 1:50-1:200,ICC 1:50-1:200 |
| Molecular Weight | 41 kDa |

Antigen Information

| | |
|--------------------------|--|
| Gene Name | CaMKI |
| Alternative Names | CaM K1; CaM KI; CaMK 1; CAMK I; CaMK1 alpha; CAMK1 PEN; CaMKI alpha;;CaMKI |
| Gene ID | |
| SwissProt ID | Q14012 |
| Immunogen | A synthesized peptide derived from human CAMKI |

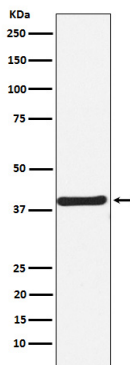
Background

Calcium/calmodulin-dependent protein kinase that operates in the calcium-triggered CaMKK-CaMK1 signaling cascade and, upon calcium influx, regulates transcription activators activity, cell cycle, hormone production, cell differentiation, actin

filament organization and neurite outgrowth. Recognizes the substrate consensus sequence [MVLIF]-x-R-x(2)-[ST]-x(3)-[MVLIF].

Research Area

Image Data



Western blot analysis of CaMKI expression in SH-SY5Y cell lysate.