

Product Name: SYPL1 Rabbit Monoclonal Antibody**Catalog #: AMRe84290**

For research use only.

Summary

Description	Recombinant rabbit monoclonal antibody
Host	Rabbit
Application	WB,IHC
Reactivity	Human
Conjugation	Unconjugated
Modification	Unmodified
Isotype	IgG
Clonality	Monoclonal
Form	Liquid
Concentration	0.71mg/ml. The concentration of this product may be batch-dependent.
Storage	Aliquot and store at -20°C (valid for 12 months). Avoid freeze/thaw cycles.
Shipping	Ice bags
Buffer	Purified antibody in PBS with 0.05% sodium azide,0.05% protective protein and 50% glycerol.
Purification	Affinity Purification

Application

Dilution Ratio	WB 1:1000-1:2000,IHC 1:100-1:200
Molecular Weight	Calculated MW: 29 kDa ; Observed MW: 29-37 kDa

Antigen Information

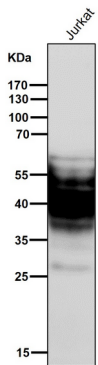
Gene Name	SYPL1
Alternative Names	Pantophysin; SYPL; Sypl1;;SYPL1
Gene ID	
SwissProt ID	Q16563
Immunogen	A synthesized peptide derived from human SYPL1

Background

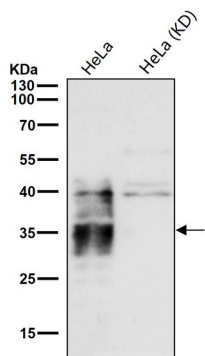
Predicted to be involved in chemical synaptic transmission. Located in extracellular exosome.

Research Area

Image Data



All lanes use the Antibody at 1:2K dilution for 1 hour at room temperature.



All lanes use the Antibody at 1:1K dilution for 1 hour at room temperature.