
Product Name: CSNK1A1 Rabbit Monoclonal Antibody**Catalog #: AMRe84286**

For research use only.

Summary

Description	Recombinant rabbit monoclonal antibody
Host	Rabbit
Application	WB
Reactivity	Human,Mouse,Rat
Conjugation	Unconjugated
Modification	Unmodified
Isotype	IgG
Clonality	Monoclonal
Form	Liquid
Concentration	0.61mg/ml. The concentration of this product may be batch-dependent.
Storage	Aliquot and store at -20°C (valid for 12 months). Avoid freeze/thaw cycles.
Shipping	Ice bags
Buffer	Purified antibody in PBS with 0.05% sodium azide,0.05% protective protein and 50% glycerol.
Purification	Affinity Purification

Application

Dilution Ratio	WB 1:1000-1:2000
Molecular Weight	Calculated MW: 39 kDa ; Observed MW: 35 kDa

Antigen Information

Gene Name	CSNK1A1
Alternative Names	CK1; CK1A; CKI alpha; CKIa; Csnk1a1; HLCDGP1;;CK I alpha
Gene ID	
SwissProt ID	P48729
Immunogen	A synthesized peptide derived from human CK I alpha

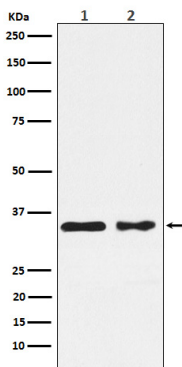
Background

Casein kinases are operationally defined by their preferential utilization of acidic proteins such as caseins as substrates. It can phosphorylate a large number of proteins. Participates in Wnt signaling. Phosphorylates CTNNB1 at 'Ser-45'. May play a role in

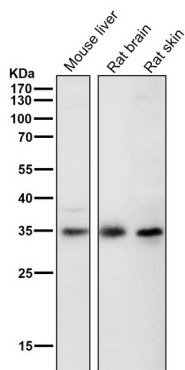
segregating chromosomes during mitosis.

Research Area

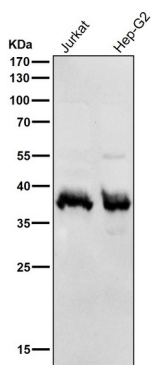
Image Data



Western blot analysis of CSNK1A1 expression in (1) MCF7 cell lysate; (2) NIH/3T3 cell lysate.



All lanes use the Antibody at 1:2K dilution for 1 hour at room temperature.



All lanes use the Antibody at 1:2K dilution for 1 hour at room temperature.