

Product Name: KAT1/HAT1 Rabbit Monoclonal Antibody**Catalog #: AMRe84284**

For research use only.

Summary

Description	Recombinant rabbit monoclonal antibody
Host	Rabbit
Application	WB,IHC,ICC/IF,ICC,FC,IP
Reactivity	Human,Mouse,Rat
Conjugation	Unconjugated
Modification	Unmodified
Isotype	IgG
Clonality	Monoclonal
Form	Liquid
Concentration	0.61mg/ml. The concentration of this product may be batch-dependent.
Storage	Aliquot and store at -20°C (valid for 12 months). Avoid freeze/thaw cycles.
Shipping	Ice bags
Buffer	Purified antibody in PBS with 0.05% sodium azide,0.05% protective protein and 50% glycerol.
Purification	Affinity Purification

Application

Dilution Ratio	WB 1:1000-1:2000,IHC 1:100-1:200,ICC/IF 1:50-1:200,ICC 1:50-1:200,FC 1:20-1:100,IP 1:20-1:50
Molecular Weight	Calculated MW: 50 kDa ; Observed MW: 45 kDa

Antigen Information

Gene Name	KAT1/HAT1
Alternative Names	hat1; KAT1;;KAT1
Gene ID	
SwissProt ID	O14929
Immunogen	A synthesized peptide derived from human KAT1

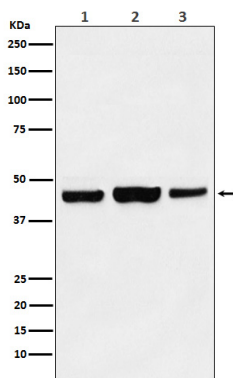
Background

Histone acetyltransferase that plays a role in different biological processes including cell cycle progression, glucose

metabolism, histone production or DNA damage repair.Coordinates histone production and acetylation via H4 promoter binding.

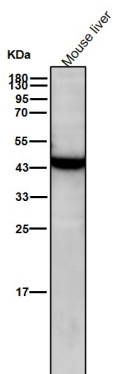
Research Area

Image Data



Western blot analysis of KAT1 / HAT1 expression in (1) MCF7 cell lysate; (2) NIH/3T3 cell lysate; (3) C6 cell lysate.

All lanes use the Antibody at 1:1K dilution for 1 hour at room temperature.



All lanes use the Antibody at 1:1K dilution for 1 hour at room temperature.

