

**Product Name: GEFH1 Rabbit Monoclonal Antibody****Catalog #: AMRe84281**

For research use only.

**Summary**

<b>Description</b>	Recombinant rabbit monoclonal antibody
<b>Host</b>	Rabbit
<b>Application</b>	WB,ICC,FC
<b>Reactivity</b>	Human,Mouse,Rat
<b>Conjugation</b>	Unconjugated
<b>Modification</b>	Unmodified
<b>Isotype</b>	IgG
<b>Clonality</b>	Monoclonal
<b>Form</b>	Liquid
<b>Concentration</b>	0.61mg/ml. The concentration of this product may be batch-dependent.
<b>Storage</b>	Aliquot and store at -20°C (valid for 12 months). Avoid freeze/thaw cycles.
<b>Shipping</b>	Ice bags
<b>Buffer</b>	Purified antibody in PBS with 0.05% sodium azide,0.05% protective protein and 50% glycerol.
<b>Purification</b>	Affinity Purification

**Application**

<b>Dilution Ratio</b>	WB 1:1000-1:2000,ICC 1:50-1:200,FC 1:20-1:100
<b>Molecular Weight</b>	112 kDa

**Antigen Information**

<b>Gene Name</b>	GEFH1
<b>Alternative Names</b>	ARHG2; ARHGEF2; GEF; GEFH1; Lbcl1; Lfc; LFP40;;GEF H1
<b>Gene ID</b>	
<b>SwissProt ID</b>	Q92974
<b>Immunogen</b>	A synthesized peptide derived from human GEF H1

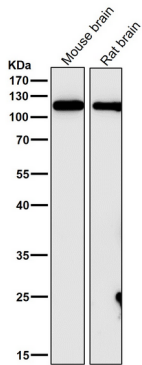
**Background**

Activates Rho-GTPases by promoting the exchange of GDP for GTP. May be involved in epithelial barrier permeability, cell motility and polarization, dendritic spine morphology, antigen presentation, leukemic cell differentiation, cell cycle regulation,

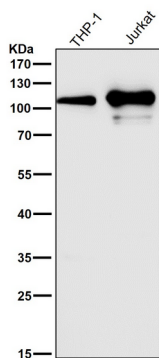
innate immune response, and cancer.

## Research Area

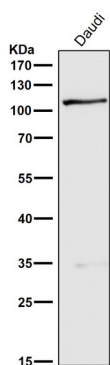
## Image Data



All lanes use the Antibody at 1:2K dilution for 1 hour at room temperature.



All lanes use the Antibody at 1:2K dilution for 1 hour at room temperature.



All lanes use the Antibody at 1:2K dilution for 1 hour at room temperature.