

**Product Name: NDUF8 Rabbit Monoclonal Antibody****Catalog #: AMRe84274**

For research use only.

**Summary**

<b>Description</b>	Recombinant rabbit monoclonal antibody
<b>Host</b>	Rabbit
<b>Application</b>	WB,IHC,ICC/IF,ICC,FC,IP
<b>Reactivity</b>	Human,Mouse,Rat
<b>Conjugation</b>	Unconjugated
<b>Modification</b>	Unmodified
<b>Isotype</b>	IgG
<b>Clonality</b>	Monoclonal
<b>Form</b>	Liquid
<b>Concentration</b>	0.61mg/ml. The concentration of this product may be batch-dependent.
<b>Storage</b>	Aliquot and store at -20°C (valid for 12 months). Avoid freeze/thaw cycles.
<b>Shipping</b>	Ice bags
<b>Buffer</b>	Purified antibody in PBS with 0.05% sodium azide,0.05% protective protein and 50% glycerol.
<b>Purification</b>	Affinity Purification

**Application**

<b>Dilution Ratio</b>	WB 1:1000-1:2000,IHC 1:100-1:200,ICC/IF 1:50-1:200,ICC 1:50-1:200,FC 1:20-1:100,IP 1:20-1:50
<b>Molecular Weight</b>	Calculated MW: 22 kDa ; Observed MW: 19 kDa

**Antigen Information**

<b>Gene Name</b>	NDUF8
<b>Alternative Names</b>	ASHI; CI-ASHI; NDUF8;;NDUF8
<b>Gene ID</b>	
<b>SwissProt ID</b>	O95169
<b>Immunogen</b>	A synthesized peptide derived from human NDUF8

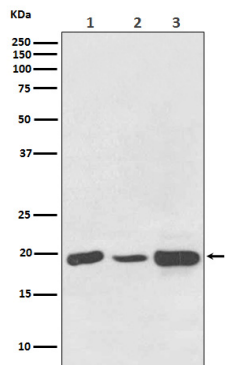
**Background**

Accessory subunit of the mitochondrial membrane respiratory chain NADH dehydrogenase (Complex I), that is believed not to

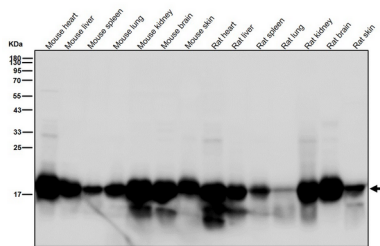
be involved in catalysis. Complex I functions in the transfer of electrons from NADH to the respiratory chain.

## Research Area

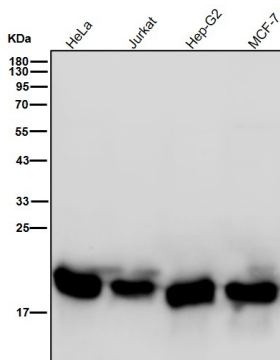
## Image Data



Western blot analysis of NDUFB8 expression in (1) HeLa cell lysate; (2) NIH/3T3 cell lysate; (3) PC12 cell lysate.



All lanes use the Antibody at 1:2K dilution for 1 hour at room temperature.



All lanes use the Antibody at 1:2K dilution for 1 hour at room temperature.