

Product Name: MTH1 Rabbit Monoclonal Antibody**Catalog #: AMRe84273**

For research use only.

Summary

Description	Recombinant rabbit monoclonal antibody
Host	Rabbit
Application	WB,IHC,ICC/IF,ICC,FC,IP
Reactivity	Human
Conjugation	Unconjugated
Modification	Unmodified
Isotype	IgG
Clonality	Monoclonal
Form	Liquid
Concentration	0.71mg/ml. The concentration of this product may be batch-dependent.
Storage	Aliquot and store at -20°C (valid for 12 months). Avoid freeze/thaw cycles.
Shipping	Ice bags
Buffer	Purified antibody in PBS with 0.05% sodium azide,0.05% protective protein and 50% glycerol.
Purification	Affinity Purification

Application

Dilution Ratio	WB 1:1000-1:2000,IHC 1:100-1:200,ICC/IF 1:50-1:200,ICC 1:50-1:200,FC 1:20-1:100,IP 1:20-1:50
Molecular Weight	18 kDa

Antigen Information

Gene Name	MTH1
Alternative Names	MTH1; NUDT 1;;NUDT1
Gene ID	
SwissProt ID	P36639
Immunogen	A synthesized peptide derived from human NUDT1

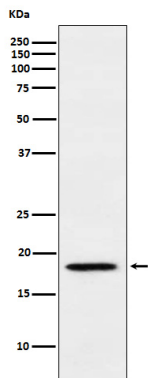
Background

Oxidized purine nucleoside triphosphate hydrolase which is a prominent sanitizer of the oxidized nucleotide pool.Catalyzes the

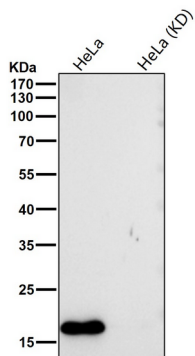
hydrolysis of 2-oxo-dATP (2-hydroxy-dATP) into 2-oxo-dAMP. Has also a significant hydrolase activity toward 2-oxo-ATP, 8-oxo-dGTP and 8-oxo-dATP.

Research Area

Image Data



Western blot analysis of MTH1 expression in Jurkat cell lysate.



All lanes use the Antibody at 1:1K dilution for 1 hour at room temperature.