
Product Name: ROR beta Rabbit Monoclonal Antibody**Catalog #: AMRe84265**

For research use only.

Summary

Description	Recombinant rabbit monoclonal antibody
Host	Rabbit
Application	WB
Reactivity	Human,Mouse
Conjugation	Unconjugated
Modification	Unmodified
Isotype	IgG
Clonality	Monoclonal
Form	Liquid
Concentration	0.71mg/ml. The concentration of this product may be batch-dependent.
Storage	Aliquot and store at -20°C (valid for 12 months). Avoid freeze/thaw cycles.
Shipping	Ice bags
Buffer	Purified antibody in PBS with 0.05% sodium azide,0.05% protective protein and 50% glycerol.
Purification	Affinity Purification

Application

Dilution Ratio	WB 1:1000-1:2000
Molecular Weight	53 kDa

Antigen Information

Gene Name	ROR beta
Alternative Names	NR1F2; ROR BETA; Rorb; RZR BETA; RZRB;;Nuclear receptor ROR beta
Gene ID	
SwissProt ID	Q92753
Immunogen	A synthesized peptide derived from human Nuclear receptor ROR beta

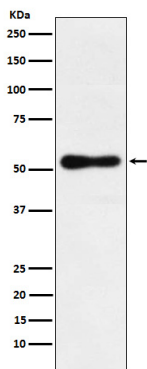
Background

Nuclear receptor that binds DNA as a monomer to ROR response elements (RORE) containing a single core motif half-site 5'-AGGTC A-3' preceded by a short A-T-rich sequence. Considered to have intrinsic transcriptional activity, have some natural

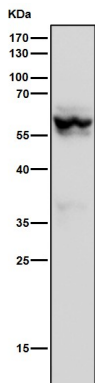
ligands such as all-trans retinoic acid (ATRA) and other retinoids which act as inverse agonists repressing the transcriptional activity.

Research Area

Image Data



Western blot analysis of ROR beta expression in HepG2 cell lysate.



All lanes use the Antibody at 1:1K dilution for 1 hour at room temperature.