

**Product Name: Syntrophin alpha 1 Rabbit Monoclonal Antibody****Catalog #: AMRe84249**

For research use only.

**Summary**

<b>Description</b>	Recombinant rabbit monoclonal antibody
<b>Host</b>	Rabbit
<b>Application</b>	WB,IHC,ICC/IF,ICC,FC
<b>Reactivity</b>	Human,Mouse
<b>Conjugation</b>	Unconjugated
<b>Modification</b>	Unmodified
<b>Isotype</b>	IgG
<b>Clonality</b>	Monoclonal
<b>Form</b>	Liquid
<b>Concentration</b>	
<b>Storage</b>	Aliquot and store at -20°C (valid for 12 months). Avoid freeze/thaw cycles.
<b>Shipping</b>	Ice bags
<b>Buffer</b>	Purified antibody in PBS with 0.05% sodium azide,0.05% protective protein and 50% glycerol.
<b>Purification</b>	Affinity Purification

**Application**

<b>Dilution Ratio</b>	WB 1:1000-1:2000,IHC 1:100-1:200,ICC/IF 1:50-1:200,ICC 1:50-1:200,FC 1:20-1:100
<b>Molecular Weight</b>	54 kDa

**Antigen Information**

<b>Gene Name</b>	Syntrophin alpha 1
<b>Alternative Names</b>	Alpha 1 syntrophin; LQT12; SNT1; Snta1; Syntrophin 1; TACIP1;;alpha 1 Syntrophin
<b>Gene ID</b>	
<b>SwissProt ID</b>	Q13424
<b>Immunogen</b>	A synthesized peptide derived from human alpha 1 Syntrophin

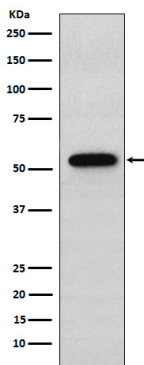
**Background**

Adapter protein that binds to and probably organizes the subcellular localization of a variety of membrane proteins. May link various receptors to the actin cytoskeleton and the extracellular matrix via the dystrophin glycoprotein complex. Plays an

important role in synapse formation and in the organization of UTRN and acetylcholine receptors at the neuromuscular synapse. Binds to phosphatidylinositol 4,5-bisphosphate.

## Research Area

## Image Data



Western blot analysis of Syntrophin alpha 1 expression in A549 cell lysate.