
Product Name: RAP1A/1B Rabbit Monoclonal Antibody**Catalog #: AMRe84248**

For research use only.

Summary

Description	Recombinant rabbit monoclonal antibody
Host	Rabbit
Application	WB,FC,IP
Reactivity	Human,Mouse,Rat
Conjugation	Unconjugated
Modification	Unmodified
Isotype	IgG
Clonality	Monoclonal
Form	Liquid
Concentration	
Storage	Aliquot and store at -20°C (valid for 12 months). Avoid freeze/thaw cycles.
Shipping	Ice bags
Buffer	Purified antibody in PBS with 0.05% sodium azide,0.05% protective protein and 50% glycerol.
Purification	Affinity Purification

Application

Dilution Ratio	WB 1:1000-1:2000,FC 1:20-1:100,IP 1:20-1:50
Molecular Weight	21 kDa

Antigen Information

Gene Name	RAP1A/1B
Alternative Names	C21KG; G 22K; K REV; KREV 1; KREV; KREV1; RAL1B; RAP 1; RAP 1A; RAP 1B; RAP1; RAP1B; SMGP21;;RAP1A/1B
Gene ID	
SwissProt ID	P61224/P62834
Immunogen	A synthesized peptide derived from human RAP1A

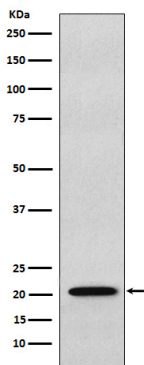
Background

RAP1A and RAP1B belong to a family of RAS-related proteins. These proteins share approximately 50% amino acid identity with

the classical RAS proteins and have numerous structural features in common.

Research Area

Image Data



Western blot analysis of RAP1A + RAP1B expression in HeLa cell lysate.