
Product Name: eIF4A1 Rabbit Monoclonal Antibody**Catalog #: AMRe84240**

For research use only.

Summary

Description	Recombinant rabbit monoclonal antibody
Host	Rabbit
Application	WB,ICC,FC
Reactivity	Human,Mouse,Rat
Conjugation	Unconjugated
Modification	Unmodified
Isotype	IgG
Clonality	Monoclonal
Form	Liquid
Concentration	0.71mg/ml. The concentration of this product may be batch-dependent.
Storage	Aliquot and store at -20°C (valid for 12 months). Avoid freeze/thaw cycles.
Shipping	Ice bags
Buffer	Purified antibody in PBS with 0.05% sodium azide,0.05% protective protein and 50% glycerol.
Purification	Affinity Purification

Application

Dilution Ratio	WB 1:1000-1:2000,ICC 1:50-1:200,FC 1:20-1:100
Molecular Weight	46 kDa

Antigen Information

Gene Name	eIF4A1
Alternative Names	DDX2; DDX2A; eIF 4A I; EIF4A; eIF4A I; eIF4A-I; EIF4A1;;eIF4A1
Gene ID	
SwissProt ID	P60842
Immunogen	A synthesized peptide derived from human eIF4A1

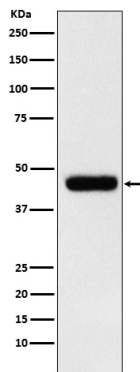
Background

ATP-dependent RNA helicase which is a subunit of the eIF4F complex involved in cap recognition and is required for mRNA binding to ribosome. In the current model of translation initiation, eIF4A unwinds RNA secondary structures in the 5'-UTR of

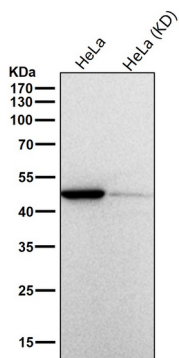
mRNAs which is necessary to allow efficient binding of the small ribosomal subunit, and subsequent scanning for the initiator codon.

Research Area

Image Data



Western blot analysis of eIF4A1 expression in MCF7 cell lysate.



All lanes use the Antibody at 1:1K dilution for 1 hour at room temperature.