

Product Name: SEC61A Rabbit Monoclonal Antibody**Catalog #: AMRe84238**

For research use only.

Summary

Description	Recombinant rabbit monoclonal antibody
Host	Rabbit
Application	WB,IHC,ICC/IF,ICC,FC,IP
Reactivity	Human,Mouse,Rat
Conjugation	Unconjugated
Modification	Unmodified
Isotype	IgG
Clonality	Monoclonal
Form	Liquid
Concentration	
Storage	Aliquot and store at -20°C (valid for 12 months). Avoid freeze/thaw cycles.
Shipping	Ice bags
Buffer	Purified antibody in PBS with 0.05% sodium azide,0.05% protective protein and 50% glycerol.
Purification	Affinity Purification

Application

Dilution Ratio	WB 1:1000-1:2000,IHC 1:100-1:200,ICC/IF 1:50-1:200,ICC 1:50-1:200,FC 1:20-1:100,IP 1:20-1:50
Molecular Weight	Calculated MW: 52 kDa ; Observed MW: 48 kDa

Antigen Information

Gene Name	SEC61A
Alternative Names	fb62c11; HSEC61; SEC 61; SEC 61A; Sec61 alpha 1; SEC61; SEC61A1; SEC61A2;;SEC61A1/2
Gene ID	
SwissProt ID	P61619/Q9H9S3
Immunogen	A synthesized peptide derived from human SEC61A1

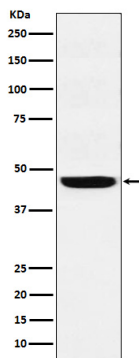
Background

Plays a crucial role in the insertion of secretory and membrane polypeptides into the ER. Required for assembly of membrane

and secretory proteins. Tightly associated with membrane-bound ribosomes, either directly or through adapter proteins.

Research Area

Image Data



Western blot analysis of SEC61A expression in A431 cell lysate.