
Product Name: Scramblase 1 Rabbit Monoclonal Antibody**Catalog #: AMRe84234**

For research use only.

Summary

Description	Recombinant rabbit monoclonal antibody
Host	Rabbit
Application	WB,ICC,FC,IP
Reactivity	Human
Conjugation	Unconjugated
Modification	Unmodified
Isotype	IgG
Clonality	Monoclonal
Form	Liquid
Concentration	
Storage	Aliquot and store at -20°C (valid for 12 months). Avoid freeze/thaw cycles.
Shipping	Ice bags
Buffer	Purified antibody in PBS with 0.05% sodium azide,0.05% protective protein and 50% glycerol.
Purification	Affinity Purification

Application

Dilution Ratio	WB 1:1000-1:2000,ICC 1:50-1:200,FC 1:20-1:100,IP 1:20-1:50
Molecular Weight	35 kDa

Antigen Information

Gene Name	Scramblase 1
Alternative Names	MmTRA1a; MmTRA1b; Nor1; PLSCR 1; Scramblase1; Tra1; Tra1a; Tra1b; Tras1; Tras2;;Phospholipid scramblase 1
Gene ID	
SwissProt ID	O15162
Immunogen	A synthesized peptide derived from human Phospholipid scramblase 1

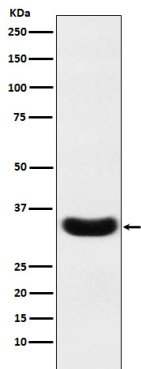
Background

Catalyzes calcium-induced ATP-independent rapid bidirectional and non-specific movement of phospholipids (lipid

scrambling or lipid flip-flop) between the inner and outer leaflet of the plasma membrane resulting in collapse of the phospholipid asymmetry which leads to phosphatidylserine externalization on the cell surface.

Research Area

Image Data



Western blot analysis of Scramblase 1 expression in A431 cell lysate.