
Product Name: PIWIL1 Rabbit Monoclonal Antibody**Catalog #: AMRe84225**

For research use only.

Summary

Description	Recombinant rabbit monoclonal antibody
Host	Rabbit
Application	WB
Reactivity	Human,Mouse,Rat
Conjugation	Unconjugated
Modification	Unmodified
Isotype	IgG
Clonality	Monoclonal
Form	Liquid
Concentration	0.49mg/ml. The concentration of this product may be batch-dependent.
Storage	Aliquot and store at -20°C (valid for 12 months). Avoid freeze/thaw cycles.
Shipping	Ice bags
Buffer	Purified antibody in PBS with 0.05% sodium azide,0.05% protective protein and 50% glycerol.
Purification	Affinity Purification

Application

Dilution Ratio	WB 1:1000-1:2000
Molecular Weight	99 kDa

Antigen Information

Gene Name	PIWIL1
Alternative Names	HIWI; MIWI; PIWI; PIWIL1;;Piwi like protein 1
Gene ID	
SwissProt ID	Q96J94
Immunogen	A synthesized peptide derived from human Piwi like protein 1

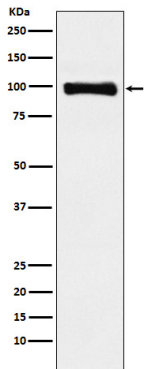
Background

Endoribonuclease that plays a central role in postnatal germ cells by repressing transposable elements and preventing their mobilization, which is essential for the germline integrity. Acts via the piRNA metabolic process, which mediates the repression

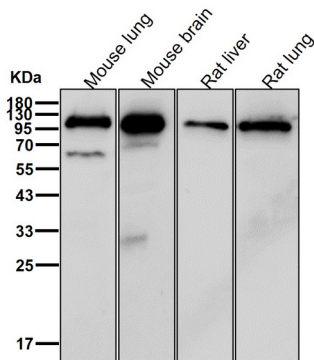
of transposable elements during meiosis by forming complexes composed of piRNAs and Piwi proteins and governs the methylation and subsequent repression of transposons.

Research Area

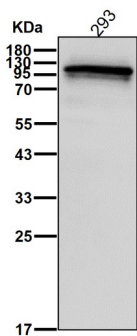
Image Data



Western blot analysis of PIWIL1 expression in HepG2 cell lysate.



All lanes use the Antibody at 1:1K dilution for 1 hour at room temperature.



All lanes use the Antibody at 1:1K dilution for 1 hour at room temperature.

All lanes use the Antibody at 1:1K dilution for 1 hour at room temperature.

