

**Product Name: VPS26 Rabbit Monoclonal Antibody****Catalog #: AMRe84214**

For research use only.

**Summary**

<b>Description</b>	Recombinant rabbit monoclonal antibody
<b>Host</b>	Rabbit
<b>Application</b>	WB,ICC,IP
<b>Reactivity</b>	Human,Mouse,Rat
<b>Conjugation</b>	Unconjugated
<b>Modification</b>	Unmodified
<b>Isotype</b>	IgG
<b>Clonality</b>	Monoclonal
<b>Form</b>	Liquid
<b>Concentration</b>	
<b>Storage</b>	Aliquot and store at -20°C (valid for 12 months). Avoid freeze/thaw cycles.
<b>Shipping</b>	Ice bags
<b>Buffer</b>	Purified antibody in PBS with 0.05% sodium azide,0.05% protective protein and 50% glycerol.
<b>Purification</b>	Affinity Purification

**Application**

<b>Dilution Ratio</b>	WB 1:1000-1:2000,ICC 1:50-1:200,IP 1:20-1:50
<b>Molecular Weight</b>	38 kDa

**Antigen Information**

<b>Gene Name</b>	VPS26
<b>Alternative Names</b>	HB58; Hbeta58; hVPS26; PEP8A; VPS 26; VPS26A;;VPS26A
<b>Gene ID</b>	
<b>SwissProt ID</b>	O75436
<b>Immunogen</b>	A synthesized peptide derived from human VPS26A

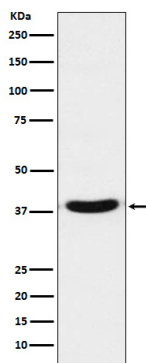
**Background**

Acts as a component of the retromer cargo-selective complex (CSC). The CSC is believed to be the core functional component of retromer or respective retromer complex variants acting to prevent missorting of selected transmembrane cargo proteins

into the lysosomal degradation pathway.

## Research Area

## Image Data



Western blot analysis of VPS26 expression in A431 cell lysate.