

Product Name: TCF21 Rabbit Monoclonal Antibody**Catalog #: AMRe84213**

For research use only.

Summary

Description	Recombinant rabbit monoclonal antibody
Host	Rabbit
Application	WB,FC,IP
Reactivity	Human
Conjugation	Unconjugated
Modification	Unmodified
Isotype	IgG
Clonality	Monoclonal
Form	Liquid
Concentration	
Storage	Aliquot and store at -20°C (valid for 12 months). Avoid freeze/thaw cycles.
Shipping	Ice bags
Buffer	Purified antibody in PBS with 0.05% sodium azide, 0.05% protective protein and 50% glycerol.
Purification	Affinity Purification

Application

Dilution Ratio	WB 1:1000-1:2000, FC 1:20-1:100, IP 1:20-1:50
Molecular Weight	Calculated MW: 20 kDa ; Observed MW: 26 kDa

Antigen Information

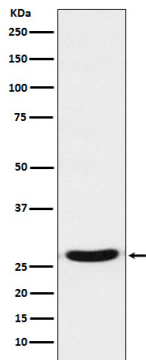
Gene Name	TCF21
Alternative Names	Capsulin; Epicardin; POD 1; POD1; TCF-21; tcf21;;TCF21
Gene ID	
SwissProt ID	O43680
Immunogen	A synthesized peptide derived from human TCF21

Background

Involved in epithelial-mesenchymal interactions in kidney and lung morphogenesis that include epithelial differentiation and branching morphogenesis. May play a role in the specification or differentiation of one or more subsets of epicardial cell types.

Research Area

Image Data



Western blot analysis of TCF21 expression in 293 cell lysate.