

**Product Name: SEC23 Rabbit Monoclonal Antibody****Catalog #: AMRe84205**

For research use only.

**Summary**

<b>Description</b>	Recombinant rabbit monoclonal antibody
<b>Host</b>	Rabbit
<b>Application</b>	WB,FC
<b>Reactivity</b>	Human
<b>Conjugation</b>	Unconjugated
<b>Modification</b>	Unmodified
<b>Isotype</b>	IgG
<b>Clonality</b>	Monoclonal
<b>Form</b>	Liquid
<b>Concentration</b>	
<b>Storage</b>	Aliquot and store at -20°C (valid for 12 months). Avoid freeze/thaw cycles.
<b>Shipping</b>	Ice bags
<b>Buffer</b>	Purified antibody in PBS with 0.05% sodium azide, 0.05% protective protein and 50% glycerol.
<b>Purification</b>	Affinity Purification

**Application**

<b>Dilution Ratio</b>	WB 1:1000-1:2000, FC 1:20-1:100
<b>Molecular Weight</b>	86 kDa

**Antigen Information**

<b>Gene Name</b>	SEC23
<b>Alternative Names</b>	CLSD; sec23a;;Sec23A
<b>Gene ID</b>	
<b>SwissProt ID</b>	Q15436
<b>Immunogen</b>	A synthesized peptide derived from human Sec23A

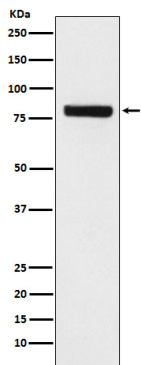
**Background**

Component of the coat protein complex II (COPII) which promotes the formation of transport vesicles from the endoplasmic reticulum (ER). The coat has two main functions, the physical deformation of the endoplasmic reticulum membrane into

vesicles and the selection of cargo molecules for their transport to the Golgi complex. Required for the translocation of insulin-induced glucose transporter SLC2A4/GLUT4 to the cell membrane (By similarity).

## Research Area

## Image Data



Western blot analysis of SEC23 expression in HeLa cell lysate.