
Product Name: Nuf2 Rabbit Monoclonal Antibody**Catalog #: AMRe84201**

For research use only.

Summary

Description	Recombinant rabbit monoclonal antibody
Host	Rabbit
Application	WB,ICC,FC
Reactivity	Human
Conjugation	Unconjugated
Modification	Unmodified
Isotype	IgG
Clonality	Monoclonal
Form	Liquid
Concentration	
Storage	Aliquot and store at -20°C (valid for 12 months). Avoid freeze/thaw cycles.
Shipping	Ice bags
Buffer	Purified antibody in PBS with 0.05% sodium azide,0.05% protective protein and 50% glycerol.
Purification	Affinity Purification

Application

Dilution Ratio	WB 1:1000-1:2000,ICC 1:50-1:200,FC 1:20-1:100
Molecular Weight	54 kDa

Antigen Information

Gene Name	Nuf2
Alternative Names	CDCA1; CT106; hNuf2; hNuf2R; hsNuf2; NUF2; NUF2R;;NUF2
Gene ID	
SwissProt ID	Q9BZD4
Immunogen	A synthesized peptide derived from human NUF2

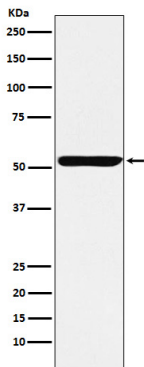
Background

Acts as a component of the essential kinetochore-associated NDC80 complex, which is required for chromosome segregation and spindle checkpoint activity. Required for kinetochore integrity and the organization of stable microtubule binding sites in the

outer plate of the kinetochore.

Research Area

Image Data



Western blot analysis of Nuf2 expression in HeLa cell lysate.