

Product Name: MYL9 Rabbit Monoclonal Antibody**Catalog #: AMRe84200**

For research use only.

Summary

Description	Recombinant rabbit monoclonal antibody
Host	Rabbit
Application	WB,IHC,IP
Reactivity	Human,Mouse,Rat
Conjugation	Unconjugated
Modification	Unmodified
Isotype	IgG
Clonality	Monoclonal
Form	Liquid
Concentration	0.61mg/ml. The concentration of this product may be batch-dependent.
Storage	Aliquot and store at -20°C (valid for 12 months). Avoid freeze/thaw cycles.
Shipping	Ice bags
Buffer	Purified antibody in PBS with 0.05% sodium azide,0.05% protective protein and 50% glycerol.
Purification	Affinity Purification

Application

Dilution Ratio	WB 1:1000-1:2000,IHC 1:100-1:200,IP 1:20-1:50
Molecular Weight	Calculated MW: 20 kDa ; Observed MW: 18 kDa

Antigen Information

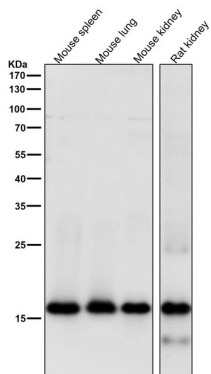
Gene Name	MYL9
Alternative Names	MLC2; CMH10;;Myosin light chain 9
Gene ID	
SwissProt ID	P24844
Immunogen	A synthesized peptide derived from human Myosin light chain 9

Background

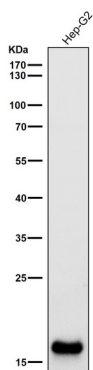
Myosin regulatory subunit that plays an important role in regulation of both smooth muscle and nonmuscle cell contractile activity via its phosphorylation. Implicated in cytokinesis, receptor capping, and cell locomotion.

Research Area

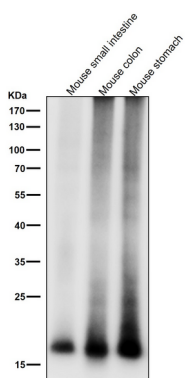
Image Data



All lanes use the Antibody at 1:1k dilution for 1 hour at room temperature.



All lanes use the Antibody at 1:1k dilution for 1 hour at room temperature.



All lanes use the Antibody at 1:1k dilution for 1 hour at room temperature.