

Product Name: ELMO1 Rabbit Monoclonal Antibody**Catalog #: AMRe84199**

For research use only.

Summary

Description	Recombinant rabbit monoclonal antibody
Host	Rabbit
Application	WB,ICC,FC,IP
Reactivity	Human,Mouse,Rat
Conjugation	Unconjugated
Modification	Unmodified
Isotype	IgG
Clonality	Monoclonal
Form	Liquid
Concentration	
Storage	Aliquot and store at -20°C (valid for 12 months). Avoid freeze/thaw cycles.
Shipping	Ice bags
Buffer	Purified antibody in PBS with 0.05% sodium azide,0.05% protective protein and 50% glycerol.
Purification	Affinity Purification

Application

Dilution Ratio	WB 1:1000-1:2000,ICC 1:50-1:200,FC 1:20-1:100,IP 1:20-1:50
Molecular Weight	84 kDa

Antigen Information

Gene Name	ELMO1
Alternative Names	CED12; Ced12 homolog 1; ELMO 1;;ELMO1
Gene ID	
SwissProt ID	Q92556
Immunogen	A synthesized peptide derived from human ELMO1

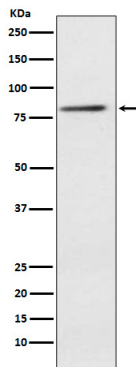
Background

Involved in cytoskeletal rearrangements required for phagocytosis of apoptotic cells and cell motility. Acts in association with DOCK1 and CRK. Was initially proposed to be required in complex with DOCK1 to activate Rac Rho small GTPases. May enhance

the guanine nucleotide exchange factor (GEF) activity of DOCK1.

Research Area

Image Data



Western blot analysis of ELMO1 expression in Jurkat cell lysate.