
Product Name: NAP1L1 Rabbit Monoclonal Antibody**Catalog #: AMRe84194**

For research use only.

Summary

Description	Recombinant rabbit monoclonal antibody
Host	Rabbit
Application	WB,FC
Reactivity	Human,Mouse,Rat
Conjugation	Unconjugated
Modification	Unmodified
Isotype	IgG
Clonality	Monoclonal
Form	Liquid
Concentration	0.71mg/ml. The concentration of this product may be batch-dependent.
Storage	Aliquot and store at -20°C (valid for 12 months). Avoid freeze/thaw cycles.
Shipping	Ice bags
Buffer	Purified antibody in PBS with 0.05% sodium azide,0.05% protective protein and 50% glycerol.
Purification	Affinity Purification

Application

Dilution Ratio	WB 1:1000-1:2000,FC 1:20-1:100
Molecular Weight	Calculated MW: 45 kDa ; Observed MW: 52,60 kDa

Antigen Information

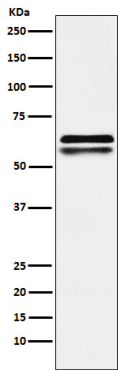
Gene Name	NAP1L1
Alternative Names	NRP; NAP1; NAP1L;;NAP1L1
Gene ID	
SwissProt ID	P55209
Immunogen	A synthesized peptide derived from human NAP1L1

Background

May be involved in modulating chromatin formation and contribute to regulation of cell proliferation.

Research Area

Image Data



Western blot analysis of NAP1L1 expression in Jurkat cell lysate.

All lanes use the Antibody at 1:1K dilution for 1 hour at room temperature.

