
Product Name: ERp29 Rabbit Monoclonal Antibody**Catalog #: AMRe84193**

For research use only.

Summary

Description	Recombinant rabbit monoclonal antibody
Host	Rabbit
Application	WB,IHC,ICC/IF,ICC
Reactivity	Human,Mouse,Rat
Conjugation	Unconjugated
Modification	Unmodified
Isotype	IgG
Clonality	Monoclonal
Form	Liquid
Concentration	
Storage	Aliquot and store at -20°C (valid for 12 months). Avoid freeze/thaw cycles.
Shipping	Ice bags
Buffer	Purified antibody in PBS with 0.05% sodium azide,0.05% protective protein and 50% glycerol.
Purification	Affinity Purification

Application

Dilution Ratio	WB 1:1000-1:2000,IHC 1:100-1:200,ICC/IF 1:50-1:200,ICC 1:50-1:200
Molecular Weight	29 kDa

Antigen Information

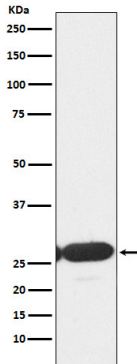
Gene Name	ERp29
Alternative Names	ERp28; ERP29_HUMAN; ERp31; HEL S 107; PDI-DB; PDIA9;;ERp29
Gene ID	
SwissProt ID	P30040
Immunogen	A synthesized peptide derived from human ERp29

Background

Proper protein folding and post-translational modifications are essential for secretory protein export out of the endoplasmic reticulum. This task is accomplished by chaperone proteins such as protein disulfide isomerase (PDI), GRP94, and BiP.

Research Area

Image Data



Western blot analysis of ERp29 expression in HepG2 cell lysate.