

Product Name: GRASP65 Rabbit Monoclonal Antibody**Catalog #: AMRe84190**

For research use only.

Summary

Description	Recombinant rabbit monoclonal antibody
Host	Rabbit
Application	WB,IHC,ICC/IF,ICC,FC,IP
Reactivity	Human
Conjugation	Unconjugated
Modification	Unmodified
Isotype	IgG
Clonality	Monoclonal
Form	Liquid
Concentration	0.71mg/ml. The concentration of this product may be batch-dependent.
Storage	Aliquot and store at -20°C (valid for 12 months). Avoid freeze/thaw cycles.
Shipping	Ice bags
Buffer	Purified antibody in PBS with 0.05% sodium azide,0.05% protective protein and 50% glycerol.
Purification	Affinity Purification

Application

Dilution Ratio	WB 1:1000-1:2000,IHC 1:100-1:200,ICC/IF 1:50-1:200,ICC 1:50-1:200,FC 1:20-1:100,IP 1:20-1:50
Molecular Weight	Calculated MW: 46 kDa ; Observed MW: 65 kDa

Antigen Information

Gene Name	GRASP65
Alternative Names	GOLPH5; GORASP1; GRASP65;;GORASP1
Gene ID	
SwissProt ID	Q9BQQ3
Immunogen	A synthesized peptide derived from human GORASP1

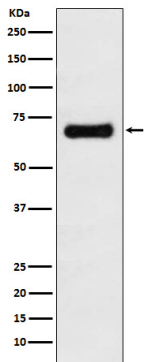
Background

Key structural protein of the Golgi apparatus.The membrane cisternae of the Golgi apparatus adhere to each other to form

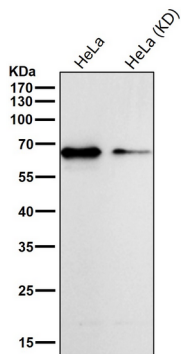
stacks, which are aligned side by side to form the Golgi ribbon. Acting in concert with GORASP2/GRASP55, is required for the formation and maintenance of the Golgi ribbon, and may be dispensable for the formation of stacks.

Research Area

Image Data



Western blot analysis of GRASP65 expression in MCF7 cell lysate.



All lanes use the Antibody at 1:1K dilution for 1 hour at room temperature.