
Product Name: SMARCC1/BAF155 Rabbit Monoclonal Antibody**Catalog #: AMRe84189**

For research use only.

Summary

Description	Recombinant rabbit monoclonal antibody
Host	Rabbit
Application	WB,ICC,FC,IP
Reactivity	Human,Rat
Conjugation	Unconjugated
Modification	Unmodified
Isotype	IgG
Clonality	Monoclonal
Form	Liquid
Concentration	
Storage	Aliquot and store at -20°C (valid for 12 months). Avoid freeze/thaw cycles.
Shipping	Ice bags
Buffer	Purified antibody in PBS with 0.05% sodium azide,0.05% protective protein and 50% glycerol.
Purification	Affinity Purification

Application

Dilution Ratio	WB 1:1000-1:2000,ICC 1:50-1:200,FC 1:20-1:100,IP 1:20-1:50
Molecular Weight	Calculated MW: 123 kDa ; Observed MW: 155 kDa

Antigen Information

Gene Name	SMARCC1/BAF155
Alternative Names	BAF155; CRACC1; Rsc8; SMARCC1; SRG3; SWI3;;SMARCC1
Gene ID	
SwissProt ID	Q92922
Immunogen	A synthesized peptide derived from human SMARCC1

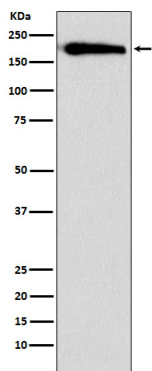
Background

Involved in transcriptional activation and repression of select genes by chromatin remodeling (alteration of DNA-nucleosome topology). Component of SWI/SNF chromatin remodeling complexes that carry out key enzymatic activities, changing

chromatin structure by altering DNA-histone contacts within a nucleosome in an ATP-dependent manner. May stimulate the ATPase activity of the catalytic subunit of the complex.

Research Area

Image Data



Western blot analysis of SMARCC1 expression in HeLa cell lysate.