

**Product Name: PAR6 Rabbit Monoclonal Antibody****Catalog #: AMRe84188**

For research use only.

**Summary**

<b>Description</b>	Recombinant rabbit monoclonal antibody
<b>Host</b>	Rabbit
<b>Application</b>	WB,IP
<b>Reactivity</b>	Human,Mouse,Rat
<b>Conjugation</b>	Unconjugated
<b>Modification</b>	Unmodified
<b>Isotype</b>	IgG
<b>Clonality</b>	Monoclonal
<b>Form</b>	Liquid
<b>Concentration</b>	
<b>Storage</b>	Aliquot and store at -20°C (valid for 12 months). Avoid freeze/thaw cycles.
<b>Shipping</b>	Ice bags
<b>Buffer</b>	Purified antibody in PBS with 0.05% sodium azide,0.05% protective protein and 50% glycerol.
<b>Purification</b>	Affinity Purification

**Application**

<b>Dilution Ratio</b>	WB 1:1000-1:2000,IP 1:20-1:50
<b>Molecular Weight</b>	37 kDa

**Antigen Information**

<b>Gene Name</b>	PAR6
<b>Alternative Names</b>	PAR6; PAR6C; TAX40; PAR-6A; TIP-40; PAR6alpha;;PAR6 alpha
<b>Gene ID</b>	
<b>SwissProt ID</b>	Q9NPB6
<b>Immunogen</b>	A synthesized peptide derived from human PAR6 alpha

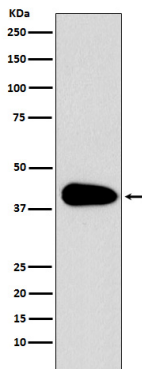
**Background**

Adapter protein involved in asymmetrical cell division and cell polarization processes. Probably involved in the formation of epithelial tight junctions. Association with PARD3 may prevent the interaction of PARD3 with F11R/JAM1, thereby preventing

tight junction assembly. The PAR6-PARD3 complex links GTP-bound Rho small GTPases to atypical protein kinase C proteins.

## Research Area

## Image Data



Western blot analysis of PAR6 expression in Jurkat cell lysate.