

Product Name: SMCHD1 Rabbit Monoclonal Antibody
Catalog #: AMRe84186



Summary

| | |
|------------------------|-----------------------------------|
| Production Name | SMCHD1 Rabbit Monoclonal Antibody |
| Description | Rabbit Monoclonal antibody |
| Host | Rabbit |
| Application | WB,IHC |
| Reactivity | Human |

Performance

| | |
|---------------------|--|
| Conjugation | Unconjugated |
| Modification | Unmodified |
| Isotype | IgG |
| Clonality | Monoclonal |
| Form | Liquid |
| Storage | Store at 4°C short term. Aliquot and store at -20°C long term. Avoid freeze/thaw cycles. |
| Buffer | Purified antibody in PBS with 0.05% sodium azide, 0.05% protective protein and 50% glycerol. |
| Purification | Affinity Purification |

Immunogen

| | |
|--------------------------|---|
| Gene Name | SMCHD1 |
| Alternative Names | BAMS; FSHD2; Smchd1;;SMCHD1 |
| Gene ID | |
| SwissProt ID | A6NHR9. A synthesized peptide derived from human SMCHD1 |

Application

| | |
|-------------------------|----------------------------------|
| Dilution Ratio | WB:1:1000-1:2000,IHC:1:100-1:200 |
| Molecular Weight | 226 kDa |

Background

Non-canonical member of the structural maintenance of chromosomes (SMC) protein family that plays a key role in

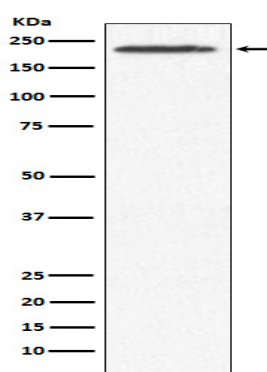
Product Name: SMCHD1 Rabbit Monoclonal Antibody
Catalog #: AMRe84186



epigenetic silencing by regulating chromatin architecture. Promotes heterochromatin formation in both autosomes and chromosome X, probably by mediating the merge of chromatin compartments. Plays a key role in chromosome X inactivation in females by promoting the spreading of heterochromatin.

Research Area

Image Data



Western blot analysis of SMCHD1 expression in 293T cell lysate.

Note

For research use only.