

**Product Name: AMHR2 Rabbit Monoclonal Antibody****Catalog #: AMRe84182**

For research use only.

**Summary**

|                      |                                                                                              |
|----------------------|----------------------------------------------------------------------------------------------|
| <b>Description</b>   | Recombinant rabbit monoclonal antibody                                                       |
| <b>Host</b>          | Rabbit                                                                                       |
| <b>Application</b>   | WB                                                                                           |
| <b>Reactivity</b>    | Human, Mouse                                                                                 |
| <b>Conjugation</b>   | Unconjugated                                                                                 |
| <b>Modification</b>  | Unmodified                                                                                   |
| <b>Isotype</b>       | IgG                                                                                          |
| <b>Clonality</b>     | Monoclonal                                                                                   |
| <b>Form</b>          | Liquid                                                                                       |
| <b>Concentration</b> | 0.61mg/ml. The concentration of this product may be batch-dependent.                         |
| <b>Storage</b>       | Aliquot and store at -20°C (valid for 12 months). Avoid freeze/thaw cycles.                  |
| <b>Shipping</b>      | Ice bags                                                                                     |
| <b>Buffer</b>        | Purified antibody in PBS with 0.05% sodium azide, 0.05% protective protein and 50% glycerol. |
| <b>Purification</b>  | Affinity Purification                                                                        |

**Application**

|                         |                                             |
|-------------------------|---------------------------------------------|
| <b>Dilution Ratio</b>   | WB 1:1000-1:2000                            |
| <b>Molecular Weight</b> | Calculated MW: 63 kDa ; Observed MW: 55 kDa |

**Antigen Information**

|                          |                                                |
|--------------------------|------------------------------------------------|
| <b>Gene Name</b>         | AMHR2                                          |
| <b>Alternative Names</b> | AMHR; AMHR2; MISR2; MISRII; MRII;;AMHR2        |
| <b>Gene ID</b>           |                                                |
| <b>SwissProt ID</b>      | Q16671                                         |
| <b>Immunogen</b>         | A synthesized peptide derived from human AMHR2 |

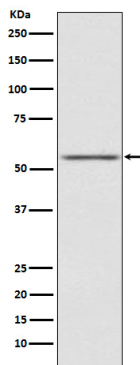
**Background**

On ligand binding, forms a receptor complex consisting of two type II and two type I transmembrane serine/threonine kinases. Type II receptors phosphorylate and activate type I receptors which autophosphorylate, then bind and activate SMAD

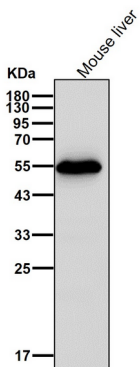
transcriptional regulators. Receptor for anti-Muellerian hormone.

## Research Area

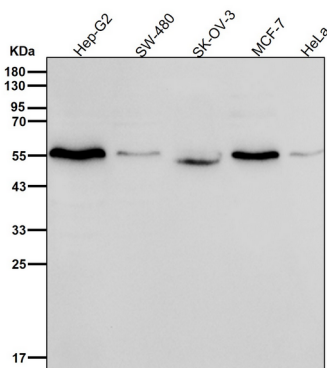
## Image Data



Western blot analysis of AMHR2 expression in SK-OV-3 cell lysate.



All lanes use the Antibody at 1:1K dilution for 1 hour at room temperature.



All lanes use the Antibody at 1:1K dilution for 1 hour at room temperature.