

Product Name: ATP1A2 Rabbit Monoclonal Antibody**Catalog #: AMRe84171**

For research use only.

Summary

Description	Recombinant rabbit monoclonal antibody
Host	Rabbit
Application	WB
Reactivity	Human,Mouse,Rat
Conjugation	Unconjugated
Modification	Unmodified
Isotype	IgG
Clonality	Monoclonal
Form	Liquid
Concentration	
Storage	Aliquot and store at -20°C (valid for 12 months). Avoid freeze/thaw cycles.
Shipping	Ice bags
Buffer	Purified antibody in PBS with 0.05% sodium azide,0.05% protective protein and 50% glycerol.
Purification	Affinity Purification

Application

Dilution Ratio	WB 1:1000-1:2000
Molecular Weight	Calculated MW: 112 kDa ; Observed MW: 102 kDa

Antigen Information

Gene Name	ATP1A2
Alternative Names	Atp1a2; FHM2; KIAA0778; MHP2;;ATP1A2
Gene ID	
SwissProt ID	P50993
Immunogen	A synthesized peptide derived from human ATP1A2

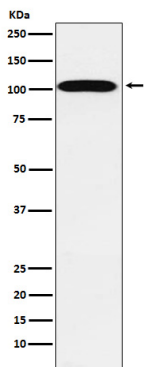
Background

This is the catalytic component of the active enzyme, which catalyzes the hydrolysis of ATP coupled with the exchange of sodium and potassium ions across the plasma membrane. This action creates the electrochemical gradient of sodium and

potassium, providing the energy for active transport of various nutrients.

Research Area

Image Data



Western blot analysis of ATP1A2 expression in Human fetal heart lysate.