

**Product Name: CPEB1 Rabbit Monoclonal Antibody****Catalog #: AMRe84166**

For research use only.

**Summary**

<b>Description</b>	Recombinant rabbit monoclonal antibody
<b>Host</b>	Rabbit
<b>Application</b>	WB,IP
<b>Reactivity</b>	Human
<b>Conjugation</b>	Unconjugated
<b>Modification</b>	Unmodified
<b>Isotype</b>	IgG
<b>Clonality</b>	Monoclonal
<b>Form</b>	Liquid
<b>Concentration</b>	
<b>Storage</b>	Aliquot and store at -20°C (valid for 12 months). Avoid freeze/thaw cycles.
<b>Shipping</b>	Ice bags
<b>Buffer</b>	Purified antibody in PBS with 0.05% sodium azide, 0.05% protective protein and 50% glycerol.
<b>Purification</b>	Affinity Purification

**Application**

<b>Dilution Ratio</b>	WB 1:1000-1:2000, IP 1:20-1:50
<b>Molecular Weight</b>	Calculated MW: 63 kDa ; Observed MW: 70 kDa

**Antigen Information**

<b>Gene Name</b>	CPEB1
<b>Alternative Names</b>	CEBP; CPE-BP1; CPEB1; h CEBP; hCPEB 1;;CPEB1
<b>Gene ID</b>	
<b>SwissProt ID</b>	Q9BZB8
<b>Immunogen</b>	A synthesized peptide derived from human CPEB1

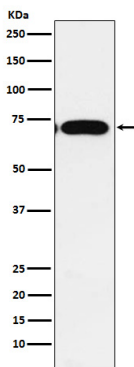
**Background**

Sequence-specific RNA-binding protein that regulates mRNA cytoplasmic polyadenylation and translation initiation during oocyte maturation, early development and at postsynapse sites of neurons. Binds to the cytoplasmic polyadenylation element

(CPE), an uridine-rich sequence element (consensus sequence 5'-UUUUUUAU-3') within the mRNA 3'-UTR. RNA binding results in a clear conformational change analogous to the Venus fly trap mechanism.

## Research Area

## Image Data



Western blot analysis of CPEB1 expression in A549 cell lysate.