

Product Name: ENT2 Rabbit Monoclonal Antibody**Catalog #: AMRe84165**

For research use only.

Summary

Description	Recombinant rabbit monoclonal antibody
Host	Rabbit
Application	WB,IHC,ICC/IF,ICC,FC
Reactivity	Human,Mouse,Rat
Conjugation	Unconjugated
Modification	Unmodified
Isotype	IgG
Clonality	Monoclonal
Form	Liquid
Concentration	0.71mg/ml. The concentration of this product may be batch-dependent.
Storage	Aliquot and store at -20°C (valid for 12 months). Avoid freeze/thaw cycles.
Shipping	Ice bags
Buffer	Purified antibody in PBS with 0.05% sodium azide,0.05% protective protein and 50% glycerol.
Purification	Affinity Purification

Application

Dilution Ratio	WB 1:1000-1:2000,IHC 1:100-1:200,ICC/IF 1:50-1:200,ICC 1:50-1:200,FC 1:20-1:100
Molecular Weight	Calculated MW: 50 kDa ; Observed MW: 55-65 kDa

Antigen Information

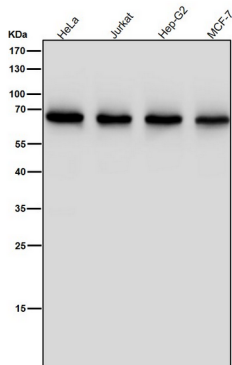
Gene Name	ENT2
Alternative Names	DER12; ei-type; HNP36; Nucleoside transporter; SLC29A2;;ENT2
Gene ID	
SwissProt ID	Q14542
Immunogen	A synthesized peptide derived from human ENT2

Background

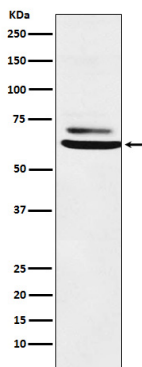
Mediates equilibrative transport of purine, pyrimidine nucleosides and the purine base hypoxanthine. Very less sensitive than SLC29A1 to inhibition by nitrobenzylthioinosine (NBMPR), dipyridamole, dilazep and draflazine.

Research Area

Image Data



All lanes use the Antibody at 1:2K dilution for 1 hour at room temperature.



Western blot analysis of ENT2 expression in K562 cell lysate.