

**Product Name: KLRG1 Rabbit Monoclonal Antibody****Catalog #: AMRe84154**

For research use only.

**Summary**

<b>Description</b>	Recombinant rabbit monoclonal antibody
<b>Host</b>	Rabbit
<b>Application</b>	WB
<b>Reactivity</b>	Human, Mouse, Rat
<b>Conjugation</b>	Unconjugated
<b>Modification</b>	Unmodified
<b>Isotype</b>	IgG
<b>Clonality</b>	Monoclonal
<b>Form</b>	Liquid
<b>Concentration</b>	0.61mg/ml. The concentration of this product may be batch-dependent.
<b>Storage</b>	Aliquot and store at -20°C (valid for 12 months). Avoid freeze/thaw cycles.
<b>Shipping</b>	Ice bags
<b>Buffer</b>	Purified antibody in PBS with 0.05% sodium azide, 0.05% protective protein and 50% glycerol.
<b>Purification</b>	Affinity Purification

**Application**

<b>Dilution Ratio</b>	WB 1:1000-1:2000
<b>Molecular Weight</b>	Calculated MW: 22 kDa ; Observed MW: 38 kDa

**Antigen Information**

<b>Gene Name</b>	KLRG1
<b>Alternative Names</b>	2F1 Ag; CLEC15A; KLRG1; MAFA 2F1; MAFA L; MAFA like; MAFAL;;KLRG1
<b>Gene ID</b>	
<b>SwissProt ID</b>	Q96E93
<b>Immunogen</b>	A synthesized peptide derived from human KLRG1

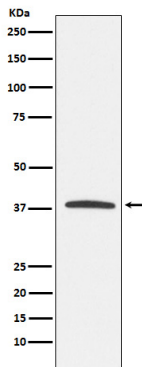
**Background**

Plays an inhibitory role on natural killer (NK) cells and T-cell functions upon binding to their non-MHC ligands. May mediate missing self recognition by binding to a highly conserved site on classical cadherins, enabling it to monitor expression of E-

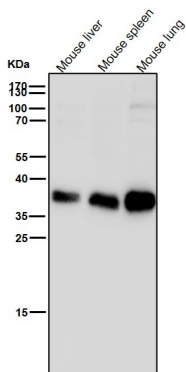
cadherin/CDH1, N-cadherin/CDH2 and R-cadherin/CDH4 on target cells.

## Research Area

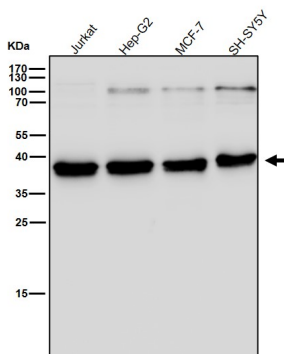
## Image Data



Western blot analysis of KLRG1 expression in Jurkat cell lysate.



All lanes use the Antibody at 1:1K dilution for 1 hour at room temperature.



All lanes use the Antibody at 1:1K dilution for 1 hour at room temperature.