
Product Name: PSME1 Rabbit Monoclonal Antibody**Catalog #: AMRe84147**

For research use only.

Summary

Description	Recombinant rabbit monoclonal antibody
Host	Rabbit
Application	WB,ICC,IP
Reactivity	Human,Mouse,Rat
Conjugation	Unconjugated
Modification	Unmodified
Isotype	IgG
Clonality	Monoclonal
Form	Liquid
Concentration	
Storage	Aliquot and store at -20°C (valid for 12 months). Avoid freeze/thaw cycles.
Shipping	Ice bags
Buffer	Purified antibody in PBS with 0.05% sodium azide,0.05% protective protein and 50% glycerol.
Purification	Affinity Purification

Application

Dilution Ratio	WB 1:1000-1:2000,ICC 1:50-1:200,IP 1:20-1:50
Molecular Weight	29 kDa

Antigen Information

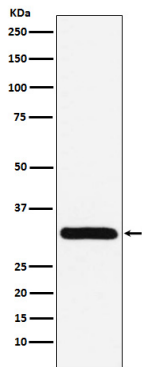
Gene Name	PSME1
Alternative Names	PA28A; IFI5111; REGalpha; PA28alpha;;PSME1
Gene ID	
SwissProt ID	Q06323
Immunogen	A synthesized peptide derived from human PSME1

Background

Implicated in immunoproteasome assembly and required for efficient antigen processing. The PA28 activator complex enhances the generation of class I binding peptides by altering the cleavage pattern of the proteasome.

Research Area

Image Data



Western blot analysis of PSME1 expression in Jurkat cell lysate.