

Product Name: Exportin 2 Rabbit Monoclonal Antibody**Catalog #: AMRe84129**

For research use only.

Summary

Description	Recombinant rabbit monoclonal antibody
Host	Rabbit
Application	WB,IHC,ICC/IF,ICC,FC
Reactivity	Human,Mouse
Conjugation	Unconjugated
Modification	Unmodified
Isotype	IgG
Clonality	Monoclonal
Form	Liquid
Concentration	0.71mg/ml. The concentration of this product may be batch-dependent.
Storage	Aliquot and store at -20°C (valid for 12 months). Avoid freeze/thaw cycles.
Shipping	Ice bags
Buffer	Purified antibody in PBS with 0.05% sodium azide,0.05% protective protein and 50% glycerol.
Purification	Affinity Purification

Application

Dilution Ratio	WB 1:1000-1:2000,IHC 1:100-1:200,ICC/IF 1:50-1:200,ICC 1:50-1:200,FC 1:20-1:100
Molecular Weight	Calculated MW: 110 kDa ; Observed MW: 98 kDa

Antigen Information

Gene Name	Exportin 2
Alternative Names	CSE1L; CAS; CSE1; Exp2; Importin-alpha re-exporter; Exportin-2; XPO2;;Exportin 2
Gene ID	
SwissProt ID	P55060
Immunogen	A synthesized peptide derived from human Exportin 2

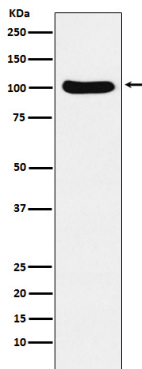
Background

Export receptor for importin-alpha. Mediates importin-alpha re-export from the nucleus to the cytoplasm after import substrates (cargos) have been released into the nucleoplasm. In the nucleus binds cooperatively to importin-alpha and to the

GTPase Ran in its active GTP-bound form.

Research Area

Image Data



Western blot analysis of Cellular Apoptosis Susceptibility expression in Ramos cell lysate.

All lanes use the Antibody at 1:1K dilution for 1 hour at room temperature.

