

Product Name: MCM6 Rabbit Monoclonal Antibody**Catalog #: AMRe84106**

For research use only.

Summary

Description	Recombinant rabbit monoclonal antibody
Host	Rabbit
Application	WB,IHC,ICC/IF,ICC,FC,IP
Reactivity	Human,Mouse,Rat
Conjugation	Unconjugated
Modification	Unmodified
Isotype	IgG
Clonality	Monoclonal
Form	Liquid
Concentration	0.71mg/ml. The concentration of this product may be batch-dependent.
Storage	Aliquot and store at -20°C (valid for 12 months). Avoid freeze/thaw cycles.
Shipping	Ice bags
Buffer	Purified antibody in PBS with 0.05% sodium azide,0.05% protective protein and 50% glycerol.
Purification	Affinity Purification

Application

Dilution Ratio	WB 1:1000-1:2000,IHC 1:100-1:200,ICC/IF 1:50-1:200,ICC 1:50-1:200,FC 1:20-1:100,IP 1:20-1:50
Molecular Weight	93 kDa

Antigen Information

Gene Name	MCM6
Alternative Names	Mcm6; Mis5;;MCM6
Gene ID	
SwissProt ID	Q14566
Immunogen	A synthesized peptide derived from human MCM6

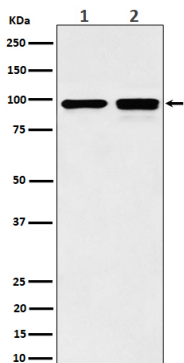
Background

Acts as component of the MCM2-7 complex (MCM complex) which is the putative replicative helicase essential for 'once per

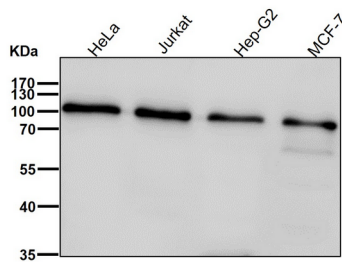
cell cycle' DNA replication initiation and elongation in eukaryotic cells.

Research Area

Image Data



Western blot analysis of MCM6 expression in (1) MCF7 cell lysate; (2) NIH/3T3 cell lysate.



All lanes use the Antibody at 1:1K dilution for 1 hour at room temperature.