

Product Name: TIM44 Rabbit Monoclonal Antibody**Catalog #: AMRe84095**

For research use only.

Summary

Description	Recombinant rabbit monoclonal antibody
Host	Rabbit
Application	WB,ICC,FC,IP
Reactivity	Human,Rat
Conjugation	Unconjugated
Modification	Unmodified
Isotype	IgG
Clonality	Monoclonal
Form	Liquid
Concentration	0.61mg/ml. The concentration of this product may be batch-dependent.
Storage	Aliquot and store at -20°C (valid for 12 months). Avoid freeze/thaw cycles.
Shipping	Ice bags
Buffer	Purified antibody in PBS with 0.05% sodium azide,0.05% protective protein and 50% glycerol.
Purification	Affinity Purification

Application

Dilution Ratio	WB 1:1000-1:2000,ICC 1:50-1:200,FC 1:20-1:100,IP 1:20-1:50
Molecular Weight	Calculated MW: 51 kDa ; Observed MW: 45 kDa

Antigen Information

Gene Name	TIM44
Alternative Names	MIMT44; TIM44;;TIM44
Gene ID	
SwissProt ID	O43615
Immunogen	A synthesized peptide derived from human TIM44

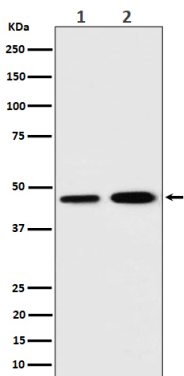
Background

Essential component of the PAM complex, a complex required for the translocation of transit peptide-containing proteins from the inner membrane into the mitochondrial matrix in an ATP-dependent manner. Recruits mitochondrial HSP70 to drive

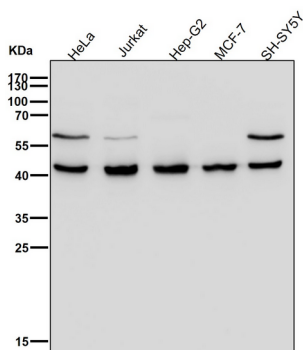
protein translocation into the matrix using ATP as an energy source.

Research Area

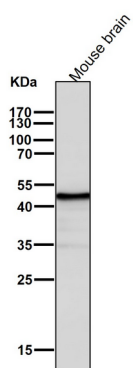
Image Data



Western blot analysis of TIM44 expression in (1) K562 cell lysate; (2) C6 cell lysate.



All lanes use the Antibody at 1:2K dilution for 1 hour at room temperature.



All lanes use the Antibody at 1:2K dilution for 1 hour at room temperature.