

Product Name: Clusterin Rabbit Monoclonal Antibody
Catalog #: AMRe84094



Summary

Production Name	Clusterin Rabbit Monoclonal Antibody
Description	Rabbit Monoclonal antibody
Host	Rabbit
Application	WB,IP,IHC
Reactivity	Mouse,Rat

Performance

Conjugation	Unconjugated
Modification	Unmodified
Isotype	IgG
Clonality	Monoclonal
Form	Liquid
Storage	Store at 4°C short term. Aliquot and store at -20°C long term. Avoid freeze/thaw cycles.
Buffer	Purified antibody in PBS with 0.05% sodium azide,0.05% protective protein and 50% glycerol.
Purification	Affinity Purification

Immunogen

Gene Name	Clusterin AAG4; Aging-associated gene 4 protein; APOJ; ApoJalpha; ApoJbeta; Apolipoprotein J; CLI; CLU; Clusterin alpha chain; Clusterin; Complement cytolysis inhibitor a chain;
Alternative Names	Complement cytolysis inhibitor; Complement cytolysis inhibitor b chain; complement lysis inhibitor; Ku70-binding protein 1; KUB1; NA1/NA2; SGP2; sulfated glycoprotein 2; Testosterone-repressed prostate message 2; TRPM2;;Clusterin
Gene ID	
SwissProt ID	Q06890(mouse)(human:P10909).A synthesized peptide derived from mouse Clusterin

Application

Dilution Ratio	WB:1:1000-1:2000,IP:1:20-1:50,IHC:1:100-1:200
-----------------------	---

Product Name: Clusterin Rabbit Monoclonal Antibody
Catalog #: AMRe84094



Molecular Weight

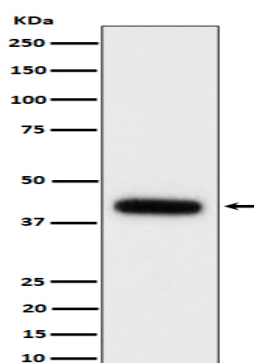
Calculated MW: 52 kDa ; Observed MW: 40 kDa

Background

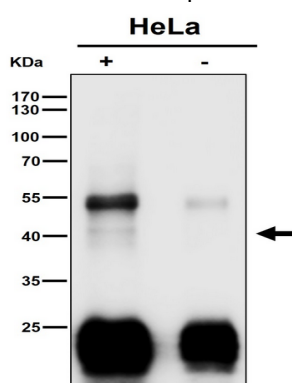
Functions as extracellular chaperone that prevents aggregation of non native proteins. Prevents stress-induced aggregation of blood plasma proteins. Inhibits formation of amyloid fibrils by APP, APOC2, B2M, CALCA, CSN3, SNCA and aggregation-prone LYZ variants (in vitro).

Research Area

Image Data



Western blot analysis of Clusterin expression in mouse serum cell lysate.



Immunoprecipitate (IP) analysis using the Antibody at 1:50 dilution. (wb at 1:1000 dilution)

Note

For research use only.