

**Product Name: PPM1G Rabbit Monoclonal Antibody****Catalog #: AMRe84054**

For research use only.

**Summary**

<b>Description</b>	Recombinant rabbit monoclonal antibody
<b>Host</b>	Rabbit
<b>Application</b>	WB,IHC,ICC/IF,ICC,FC
<b>Reactivity</b>	Human,Rat
<b>Conjugation</b>	Unconjugated
<b>Modification</b>	Unmodified
<b>Isotype</b>	IgG
<b>Clonality</b>	Monoclonal
<b>Form</b>	Liquid
<b>Concentration</b>	
<b>Storage</b>	Aliquot and store at -20°C (valid for 12 months). Avoid freeze/thaw cycles.
<b>Shipping</b>	Ice bags
<b>Buffer</b>	Purified antibody in PBS with 0.05% sodium azide,0.05% protective protein and 50% glycerol.
<b>Purification</b>	Affinity Purification

**Application**

<b>Dilution Ratio</b>	WB 1:1000-1:2000,IHC 1:100-1:200,ICC/IF 1:50-1:200,ICC 1:50-1:200,FC 1:20-1:100
<b>Molecular Weight</b>	Calculated MW: 59 kDa ; Observed MW: 75 kDa

**Antigen Information**

<b>Gene Name</b>	PPM1G
<b>Alternative Names</b>	PP2C; PP2C gamma; PP2CG; PPM1G; PPP2CG; Protein phosphatase 1C; Protein phosphatase 1G;;PPM1G
<b>Gene ID</b>	
<b>SwissProt ID</b>	O15355
<b>Immunogen</b>	A synthesized peptide derived from human PPM1G

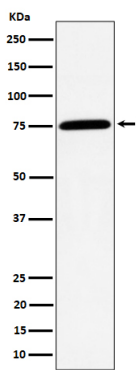
**Background**

The protein encoded by this gene is a member of the PP2C family of Ser/Thr protein phosphatases. PP2C family members are

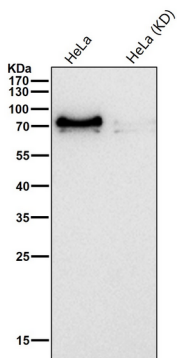
known to be negative regulators of cell stress response pathways. This phosphatase is found to be responsible for the dephosphorylation of Pre-mRNA splicing factors, which is important for the formation of functional spliceosome. Studies of a similar gene in mice suggested a role of this phosphatase in regulating cell cycle progression.

## Research Area

## Image Data



Western blot analysis of PPM1G expression in Jurkat cell lysate.



All lanes use the Antibody at 1:1K dilution for 1 hour at room temperature.