

Product Name: WIPI1 Rabbit Monoclonal Antibody**Catalog #: AMRe84029**

For research use only.

Summary

Description	Recombinant rabbit monoclonal antibody
Host	Rabbit
Application	WB,IHC
Reactivity	Human,Mouse,Rat
Conjugation	Unconjugated
Modification	Unmodified
Isotype	IgG
Clonality	Monoclonal
Form	Liquid
Concentration	0.59mg/ml. The concentration of this product may be batch-dependent.
Storage	Aliquot and store at -20°C (valid for 12 months). Avoid freeze/thaw cycles.
Shipping	Ice bags
Buffer	Purified antibody in PBS with 0.05% sodium azide,0.05% protective protein and 50% glycerol.
Purification	Affinity Purification

Application

Dilution Ratio	WB 1:1000-1:2000,IHC 1:100-1:200
Molecular Weight	Calculated MW: 49 kDa ; Observed MW: 48 kDa

Antigen Information

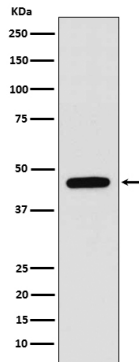
Gene Name	WIPI1
Alternative Names	ATG18; ATG18A; WIPI 1; WIPI-1; WIPI49;;WIPI 1
Gene ID	
SwissProt ID	Q5MNZ9
Immunogen	A synthesized peptide derived from human WIPI 1

Background

Component of the autophagy machinery that controls the major intracellular degradation process by which cytoplasmic materials are packaged into autophagosomes and delivered to lysosomes for degradation.

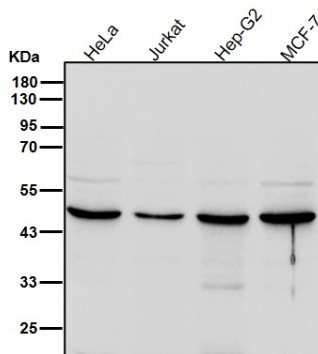
Research Area

Image Data



Western blot analysis of WIP1 expression in A375 cell lysate.

All lanes use the Antibody at 1:1K dilution for 1 hour at room temperature.



All lanes use the Antibody at 1:1K dilution for 1 hour at room temperature.

