

Product Name: Phospho-MLKL(S358) Rabbit Monoclonal Antibody**Catalog #: AMRe84013**

For research use only.

Summary

Description	Recombinant rabbit monoclonal antibody
Host	Rabbit
Application	WB,IHC
Reactivity	Human
Conjugation	Unconjugated
Modification	Phosphorylated
Isotype	IgG
Clonality	Monoclonal
Form	Liquid
Concentration	0.5mg/ml. The concentration of this product may be batch-dependent.
Storage	Aliquot and store at -20°C (valid for 12 months). Avoid freeze/thaw cycles.
Shipping	Ice bags
Buffer	Purified antibody in PBS with 0.05% sodium azide,0.05% protective protein and 50% glycerol.
Purification	Affinity Purification

Application

Dilution Ratio	WB 1:1000-1:2000,IHC 1:100-1:200
Molecular Weight	54 kDa

Antigen Information

Gene Name	Phospho-MLKL(S358)
Alternative Names	hMLKL; Mlkl;;p-MLKL (S358)
Gene ID	
SwissProt ID	Q8NB16
Immunogen	A synthesized peptide derived from human MLKL around the phosphorylation site of S358

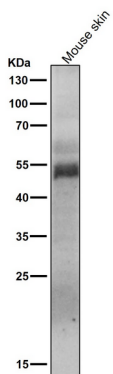
Background

Pseudokinase that plays a key role in TNF-induced necroptosis, a programmed cell death process. Activated following phosphorylation by RIPK3, leading to homotrimerization, localization to the plasma membrane and execution of programmed

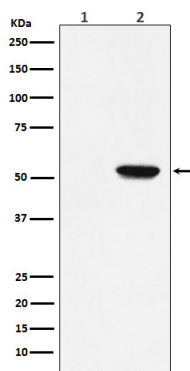
necrosis characterized by calcium influx and plasma membrane damage.

Research Area

Image Data



All lanes use the Antibody at 1:1K dilution for 1 hour at room temperature.



Western blot analysis of Phospho-MLKL (S358) expression in (1) HT-29 cell lysate; (2) HT-29 cell lysate treated with TNF alpha+ Smac mimetic+ z-VAD.