

Product Name: Cytochrome P450 2D6 Rabbit Monoclonal Antibody**Catalog #: AMRe84005**

For research use only.

Summary

Description	Recombinant rabbit monoclonal antibody
Host	Rabbit
Application	WB,IHC,ICC/IF,ICC,FC
Reactivity	Human
Conjugation	Unconjugated
Modification	Unmodified
Isotype	IgG
Clonality	Monoclonal
Form	Liquid
Concentration	
Storage	Aliquot and store at -20°C (valid for 12 months). Avoid freeze/thaw cycles.
Shipping	Ice bags
Buffer	Purified antibody in PBS with 0.05% sodium azide,0.05% protective protein and 50% glycerol.
Purification	Affinity Purification

Application

Dilution Ratio	WB 1:1000-1:2000,IHC 1:100-1:200,ICC/IF 1:50-1:200,ICC 1:50-1:200,FC 1:20-1:100
Molecular Weight	Calculated MW: 56 kDa ; Observed MW: 50,55,80 kDa

Antigen Information

Gene Name	Cytochrome P450 2D6
Alternative Names	CPD6; CYP2D; CYP2D6; CYP2D7AP; CYP2D7BP; CYP2D7P2; CYP2D8P2; CYP2DL1; CYP11D6; P450 DB1; P450C2D; P450DB1; Xenobiotic monooxygenase;;Cytochrome P450 2D6
Gene ID	
SwissProt ID	P10635
Immunogen	A synthesized peptide derived from human Cytochrome P450 2D6

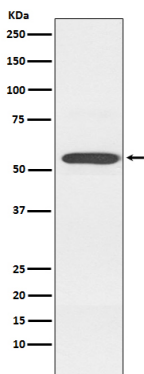
Background

A cytochrome P450 monooxygenase involved in the metabolism of fatty acids, steroids and retinoids. Mechanistically, uses

molecular oxygen inserting one oxygen atom into a substrate, and reducing the second into a water molecule, with two electrons provided by NADPH via cytochrome P450 reductase (NADPH--hemoprotein reductase).

Research Area

Image Data



Western blot analysis of Cytochrome P450 2D6 expression in K562 cell lysate.