

Product Name: ISG15 Rabbit Monoclonal Antibody**Catalog #: AMRe84002**

For research use only.

Summary

Description	Recombinant rabbit monoclonal antibody
Host	Rabbit
Application	WB,IHC,ICC/IF,ICC
Reactivity	Human
Conjugation	Unconjugated
Modification	Unmodified
Isotype	IgG
Clonality	Monoclonal
Form	Liquid
Concentration	0.68mg/ml. The concentration of this product may be batch-dependent.
Storage	Aliquot and store at -20°C (valid for 12 months). Avoid freeze/thaw cycles.
Shipping	Ice bags
Buffer	Purified antibody in PBS with 0.05% sodium azide,0.05% protective protein and 50% glycerol.
Purification	Affinity Purification

Application

Dilution Ratio	WB 1:1000-1:2000,IHC 1:100-1:200,ICC/IF 1:50-1:200,ICC 1:50-1:200
Molecular Weight	Calculated MW: 18 kDa ; Observed MW: 15 kDa

Antigen Information

Gene Name	ISG15
Alternative Names	IP17; Ubiquitin cross-reactive protein; hUCRP; ISG15; G1P2;;ISG15
Gene ID	
SwissProt ID	P05161
Immunogen	A synthesized peptide derived from human ISG15

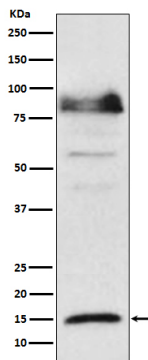
Background

Ubiquitin-like protein which plays a key role in the innate immune response to viral infection either via its conjugation to a target protein (ISGylation) or via its action as a free or unconjugated protein. ISGylation involves a cascade of enzymatic

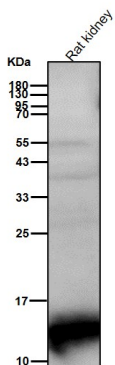
reactions involving E1, E2, and E3 enzymes which catalyze the conjugation of ISG15 to a lysine residue in the target protein.

Research Area

Image Data



Western blot analysis of ISG15 expression in HeLa cell lysate treated with IFN α .



All lanes use the Antibody at 1:1K dilution for 1 hour at room temperature.