

**Product Name: xCT Rabbit Monoclonal Antibody****Catalog #: AMRe83994**

For research use only.

**Summary**

|                      |   |
|----------------------|---|
| <b>Description</b>   | Recombinant rabbit monoclonal antibody  |
| <b>Host</b>          | Rabbit  |
| <b>Application</b>   | WB,ICC,IP   |
| <b>Reactivity</b>    | Human,Mouse,Rat   |
| <b>Conjugation</b>   | Unconjugated  |
| <b>Modification</b>  | Unmodified  |
| <b>Isotype</b>       | IgG   |
| <b>Clonality</b>     | Monoclonal  |
| <b>Form</b>          | Liquid  |
| <b>Concentration</b> | 0.34mg/ml. The concentration of this product may be batch-dependent.                        |
| <b>Storage</b>       | Aliquot and store at -20°C (valid for 12 months). Avoid freeze/thaw cycles.                 |
| <b>Shipping</b>      | Ice bags  |
| <b>Buffer</b>        | Purified antibody in PBS with 0.05% sodium azide,0.05% protective protein and 50% glycerol. |
| <b>Purification</b>  | Affinity Purification   |

**Application**

|                         |  |
|-------------------------|--|
| <b>Dilution Ratio</b>   | WB 1:1000-1:2000,ICC 1:50-1:200,IP 1:20-1:50 |
| <b>Molecular Weight</b> | 55 kDa                                       |

**Antigen Information**

|                          |  |
|--------------------------|--|
| <b>Gene Name</b>         | xCT  |
| <b>Alternative Names</b> | CCBR1; Cysteine/glutamate transporter; SLC7A11; solute carrier family 7; xCT; ;xCT |
| <b>Gene ID</b>           |  |
| <b>SwissProt ID</b>      | Q9UPY5   |
| <b>Immunogen</b>         | A synthesized peptide derived from human xCT                                       |

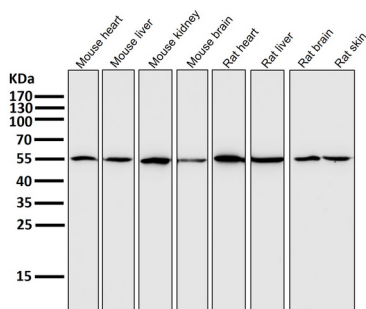
**Background**

Heterodimer with SLC3A2, that functions as an antiporter by mediating the exchange of extracellular anionic L-cystine and intracellular L-glutamate across the cellular plasma membrane.Provides L-cystine for the maintenance of the redox balance

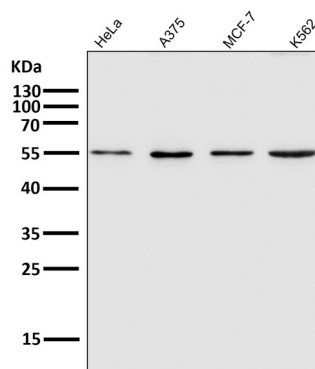
between extracellular L-cystine and L-cysteine and for the maintenance of the intracellular levels of glutathione that is essential for cells protection from oxidative stress.

## Research Area

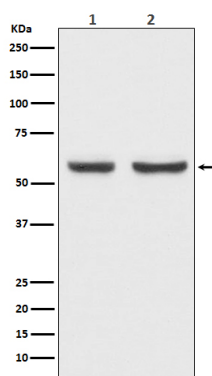
## Image Data



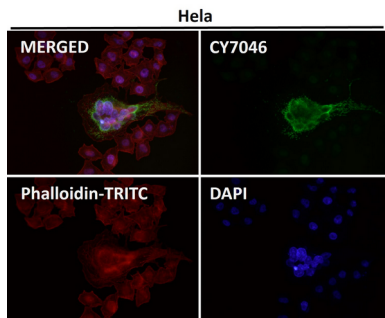
All lanes use the Antibody at 1:2K dilution for 1 hour at room temperature.



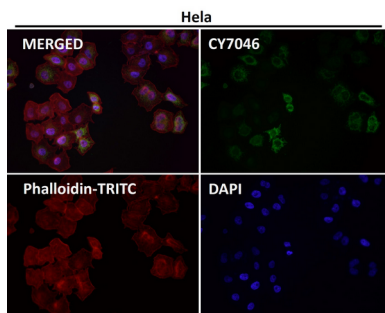
All lanes use the Antibody at 1:2K dilution for 1 hour at room temperature.



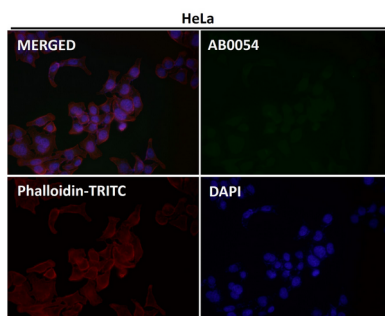
Western blot analysis of xCT expression in (1) HepG2 cell lysate; (2) Mouse brain lysate.



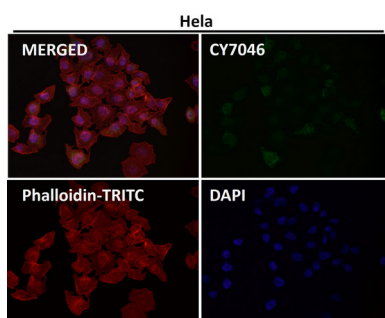
Immunofluorescent analysis using the Antibody at 1:50 dilution.



Immunofluorescent analysis using the Antibody at 1:50 dilution.



Immunofluorescent analysis using the Antibody at 1:150 dilution.



Immunofluorescent analysis using the Antibody at 1:150 dilution.