

Product Name: mSin3A Rabbit Monoclonal Antibody**Catalog #: AMRe83980**

For research use only.

Summary

Description	Recombinant rabbit monoclonal antibody
Host	Rabbit
Application	WB,IHC,ICC/IF,ICC,FC
Reactivity	Human,Mouse,Rat
Conjugation	Unconjugated
Modification	Unmodified
Isotype	IgG
Clonality	Monoclonal
Form	Liquid
Concentration	0.68mg/ml. The concentration of this product may be batch-dependent.
Storage	Aliquot and store at -20°C (valid for 12 months). Avoid freeze/thaw cycles.
Shipping	Ice bags
Buffer	Purified antibody in PBS with 0.05% sodium azide,0.05% protective protein and 50% glycerol.
Purification	Affinity Purification

Application

Dilution Ratio	WB 1:1000-1:2000,IHC 1:100-1:200,ICC/IF 1:50-1:200,ICC 1:50-1:200,FC 1:20-1:100
Molecular Weight	Calculated MW: 145 kDa ; Observed MW: 150 kDa

Antigen Information

Gene Name	mSin3A
Alternative Names	Histone deacetylase complex subunit Sin 3a; Paired amphipathic helix protein Sin 3a; SIN3 homolog A;;SIN3A
Gene ID	
SwissProt ID	Q96ST3
Immunogen	A synthesized peptide derived from human SIN3A

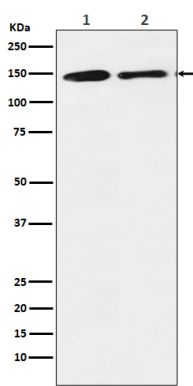
Background

Acts as a transcriptional repressor. Corepressor for REST. Interacts with MXI1 to repress MYC responsive genes and antagonize

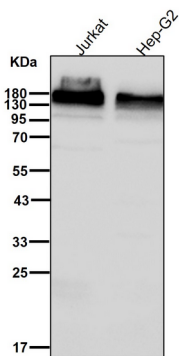
MYC oncogenic activities. Also interacts with MXD1-MAX heterodimers to repress transcription by tethering SIN3A to DNA. Acts cooperatively with OGT to repress transcription in parallel with histone deacetylation. Involved in the control of the circadian rhythms. Required for the transcriptional repression of circadian target genes, such as PER1, mediated by the large PER complex through histone deacetylation.

Research Area

Image Data



Western blot analysis of mSin3A expression in (1) K562 cell lysate; (2) RAW 264.7 cell lysate.



All lanes use the Antibody at 1:1K dilution for 1 hour at room temperature.