

**Product Name: INDO Rabbit Monoclonal Antibody****Catalog #: AMRe83976**

For research use only.

**Summary**

<b>Description</b>	Recombinant rabbit monoclonal antibody
<b>Host</b>	Rabbit
<b>Application</b>	WB,ICC
<b>Reactivity</b>	Human
<b>Conjugation</b>	Unconjugated
<b>Modification</b>	Unmodified
<b>Isotype</b>	IgG
<b>Clonality</b>	Monoclonal
<b>Form</b>	Liquid
<b>Concentration</b>	
<b>Storage</b>	Aliquot and store at -20°C (valid for 12 months). Avoid freeze/thaw cycles.
<b>Shipping</b>	Ice bags
<b>Buffer</b>	Purified antibody in PBS with 0.05% sodium azide, 0.05% protective protein and 50% glycerol.
<b>Purification</b>	Affinity Purification

**Application**

<b>Dilution Ratio</b>	WB 1:1000-1:2000, ICC 1:50-1:200
<b>Molecular Weight</b>	45 kDa

**Antigen Information**

<b>Gene Name</b>	INDO
<b>Alternative Names</b>	3-dioxygenase; IDO 1; IDO; IDO1; INDO; indolamine 2,3 dioxygenase; Indole 2 3 dioxygenase;;IDO 1
<b>Gene ID</b>	
<b>SwissProt ID</b>	P14902
<b>Immunogen</b>	A synthesized peptide derived from human IDO 1

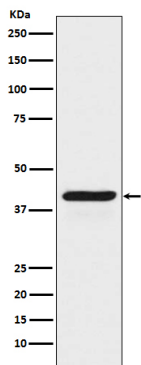
**Background**

Catalyzes the first and rate limiting step of the catabolism of the essential amino acid tryptophan along the kynurenine

pathway. Involved in the peripheral immune tolerance, contributing to maintain homeostasis by preventing autoimmunity or immunopathology that would result from uncontrolled and overreacting immune responses.

## Research Area

## Image Data



Western blot analysis of INDO expression in HeLa cell lysate treated with IFN gamma.