

**Product Name: ORM1 Rabbit Monoclonal Antibody****Catalog #: AMRe83975**

For research use only.

**Summary**

<b>Description</b>	Recombinant rabbit monoclonal antibody
<b>Host</b>	Rabbit
<b>Application</b>	WB,IHC
<b>Reactivity</b>	Human
<b>Conjugation</b>	Unconjugated
<b>Modification</b>	Unmodified
<b>Isotype</b>	IgG
<b>Clonality</b>	Monoclonal
<b>Form</b>	Liquid
<b>Concentration</b>	
<b>Storage</b>	Aliquot and store at -20°C (valid for 12 months). Avoid freeze/thaw cycles.
<b>Shipping</b>	Ice bags
<b>Buffer</b>	Purified antibody in PBS with 0.05% sodium azide,0.05% protective protein and 50% glycerol.
<b>Purification</b>	Affinity Purification

**Application**

<b>Dilution Ratio</b>	WB 1:1000-1:2000,IHC 1:100-1:200
<b>Molecular Weight</b>	Calculated MW: 24 kDa ; Observed MW: 47 kDa

**Antigen Information**

<b>Gene Name</b>	ORM1
<b>Alternative Names</b>	AGP 1; AGP A; AGP1; Alpha 1 acid glycoprotein; alpha-1-AGP; HEL S 153w; ORM; Orosomucoid 1;;AGP 1
<b>Gene ID</b>	
<b>SwissProt ID</b>	P02763
<b>Immunogen</b>	A synthesized peptide derived from human AGP 1

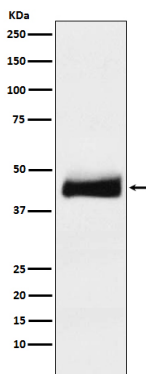
**Background**

Functions as a transport protein in the blood stream. Binds various ligands in the interior of its beta-barrel domain. Also binds

synthetic drugs and influences their distribution and availability in the body. Appears to function in modulating the activity of the immune system during the acute-phase reaction.

## Research Area

## Image Data



Western blot analysis of ORM1 expression in human testis lysate.