

Product Name: GPX4 Rabbit Monoclonal Antibody**Catalog #: AMRe83972**

For research use only.

Summary

Description	Recombinant rabbit monoclonal antibody
Host	Rabbit
Application	WB,IHC,ICC/IF,ICC
Reactivity	Human,Mouse,Rat
Conjugation	Unconjugated
Modification	Unmodified
Isotype	IgG
Clonality	Monoclonal
Form	Liquid
Concentration	0.34mg/ml. The concentration of this product may be batch-dependent.
Storage	Aliquot and store at -20°C (valid for 12 months). Avoid freeze/thaw cycles.
Shipping	Ice bags
Buffer	Purified antibody in PBS with 0.05% sodium azide,0.05% protective protein and 50% glycerol.
Purification	Affinity Purification

Application

Dilution Ratio	WB 1:1000-1:2000,IHC 1:100-1:200,ICC/IF 1:50-1:200,ICC 1:50-1:200
Molecular Weight	Calculated MW: 22 kDa ; Observed MW: 17 kDa

Antigen Information

Gene Name	GPX4
Alternative Names	GPX4; GSHPx-4; MCSP; mitochondrial; PHGPx; Phospholipid hydroperoxidase; snGPx; snPHGPx; Sperm nucleus glutathione peroxidase;;GPX4
Gene ID	
SwissProt ID	P36969
Immunogen	A synthesized peptide derived from human GPX4

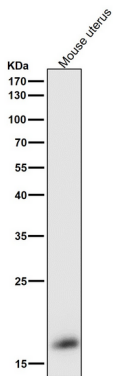
Background

Protects cells against membrane lipid peroxidation and cell death. Required for normal sperm development and male fertility.

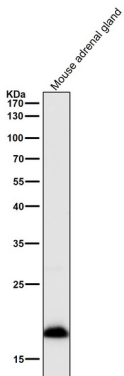
Could play a major role in protecting mammals from the toxicity of ingested lipid hydroperoxides. Essential for embryonic development. Protects from radiation and oxidative damage.

Research Area

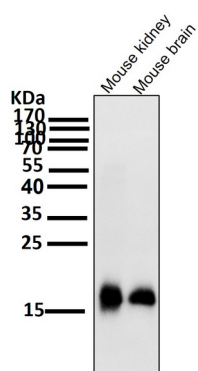
Image Data



All lanes use the Antibody at 1:2K dilution for 1 hour at room temperature.

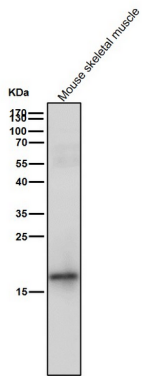


All lanes use the Antibody at 1:2K dilution for 1 hour at room temperature.

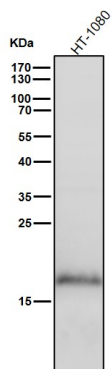


All lanes use the Antibody at 1:2K dilution for 1 hour at room temperature.

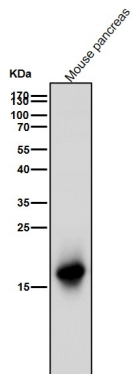
All lanes use the Antibody at 1:2K dilution for 1 hour at room temperature.



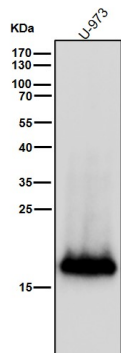
All lanes use the Antibody at 1:2K dilution for 1 hour at room temperature.



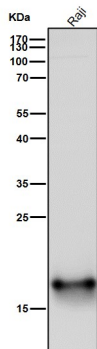
All lanes use the Antibody at 1:2K dilution for 1 hour at room temperature.



All lanes use the Antibody at 1:2K dilution for 1 hour at room temperature.



All lanes use the Antibody at 1:2K dilution for 1 hour at room temperature.



All lanes use the Antibody at 1:2K dilution for 1 hour at room temperature.

