

Product Name: ITCH Rabbit Monoclonal Antibody**Catalog #: AMRe83971**

For research use only.

Summary

Description	Recombinant rabbit monoclonal antibody
Host	Rabbit
Application	WB
Reactivity	Human,Mouse,Rat
Conjugation	Unconjugated
Modification	Unmodified
Isotype	IgG
Clonality	Monoclonal
Form	Liquid
Concentration	0.59mg/ml. The concentration of this product may be batch-dependent.
Storage	Aliquot and store at -20°C (valid for 12 months). Avoid freeze/thaw cycles.
Shipping	Ice bags
Buffer	Purified antibody in PBS with 0.05% sodium azide,0.05% protective protein and 50% glycerol.
Purification	Affinity Purification

Application

Dilution Ratio	WB 1:1000-1:2000
Molecular Weight	103 kDa

Antigen Information

Gene Name	ITCH
Alternative Names	ADMFD; AIF4; AIP4; Atrophin 1 interacting protein 4; Itchy homolog E3 ubiquitin protein ligase; NAPP1; NFE2 associated polypeptide 1; Ubiquitin protein ligase ITCH;;ITCH
Gene ID	
SwissProt ID	Q96J02
Immunogen	A synthesized peptide derived from human ITCH

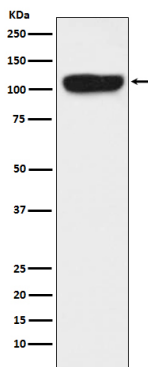
Background

Acts as an E3 ubiquitin-protein ligase which accepts ubiquitin from an E2 ubiquitin-conjugating enzyme in the form of a

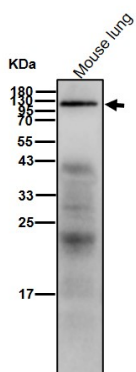
thioester and then directly transfers the ubiquitin to targeted substrates.

Research Area

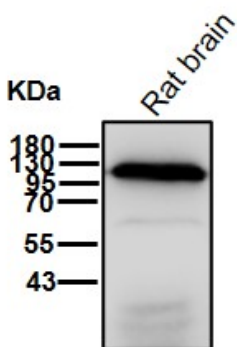
Image Data



Western blot analysis of ITCH expression in K562 cell lysate.



All lanes use the Antibody at 1:1K dilution for 1 hour at room temperature.



All lanes use the Antibody at 1:1K dilution for 1 hour at room temperature.