

**Product Name: FEN1 Rabbit Monoclonal Antibody****Catalog #: AMRe83970**

For research use only.

**Summary**

<b>Description</b>	Recombinant rabbit monoclonal antibody
<b>Host</b>	Rabbit
<b>Application</b>	WB,IHC
<b>Reactivity</b>	Human,Mouse,Rat
<b>Conjugation</b>	Unconjugated
<b>Modification</b>	Unmodified
<b>Isotype</b>	IgG
<b>Clonality</b>	Monoclonal
<b>Form</b>	Liquid
<b>Concentration</b>	
<b>Storage</b>	Aliquot and store at -20°C (valid for 12 months). Avoid freeze/thaw cycles.
<b>Shipping</b>	Ice bags
<b>Buffer</b>	Purified antibody in PBS with 0.05% sodium azide,0.05% protective protein and 50% glycerol.
<b>Purification</b>	Affinity Purification

**Application**

<b>Dilution Ratio</b>	WB 1:1000-1:2000,IHC 1:100-1:200
<b>Molecular Weight</b>	Calculated MW: 43 kDa ; Observed MW: 42 kDa

**Antigen Information**

<b>Gene Name</b>	FEN1
<b>Alternative Names</b>	DNase IV; FEN1; Flap endonuclease 1; Flap structure specific endonuclease 1; hFEN-1; hFEN1; Maturation factor 1; MF1; Rad2;;FEN1
<b>Gene ID</b>	
<b>SwissProt ID</b>	P39748
<b>Immunogen</b>	A synthesized peptide derived from human FEN1

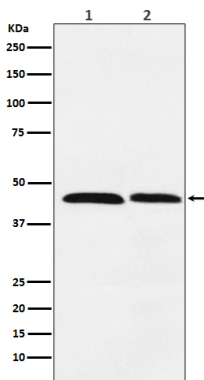
**Background**

Acts as a genome stabilization factor that prevents flaps from equilibrating into structures that lead to duplications and

deletions. Also possesses 5'-3' exonuclease activity on nicked or gapped double-stranded DNA, and exhibits RNase H activity. Also involved in replication and repair of rDNA and in repairing mitochondrial DNA.

## Research Area

## Image Data



Western blot analysis of FEN1 expression in (1) HeLa cell lysate; (2) Daudi cell lysate.